

TECHNICAL DOCUMENT

INSTALLATION GUIDE: TOUCH SCREEN KIT

Product Identification: 17" Touch Screen Kit (PN 35575)

Purpose: This document details the installation and calibration of the Touch Screen Kit.

Qty.	17" Touch Screen Kit	PN
1	Monitor	37761
1	VESA Mount Plate, 75 mm	35496
1	USB Extension Cable, 10 ft	30279
1	SVGA Video Extension Cable, 15 ft	35705
2	M4 x 10 mm Machine Screw	30537
2	M4 x 10 mm Thread-forming Screw	34249
3	Cable Tie Holder	33193
5	Cable Tie, 4 in.	31719

NOTE: If any of these items are missing, contact Tormach Customer Service at (608) 849-8381 for a replacement.

NOTE: This document assumes that the machine arm has already been installed.

Installation

1. Using a Phillips screwdriver, remove four screws on existing monitor mounting plate (see **Figure 1**); set screws aside and discard monitor mounting plate.
2. Using four screws set aside in Step 1, mount VESA Mount Plate to machine arm.

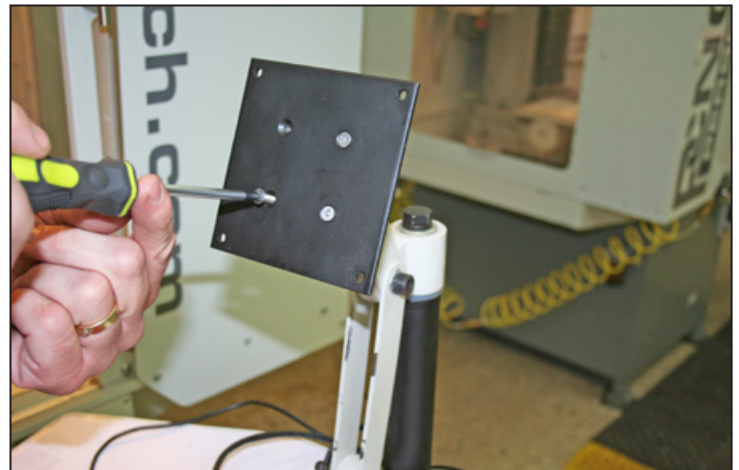


Figure 1

TECHNICAL DOCUMENT

3. Line up VESA Mount Plate with Touch Screen Monitor and attach as follows (see **Figure 2**):
 - Use two M4 x 10 mm Machine Screws on the upper two screw holes
 - Use two M4 x 10 mm Thread-forming Screws on the lower two screw holes
4. Connect USB, SVGA, and power cables to monitor.
5. Route cables to Square Tube Arm (see **Figure 3**). Attach cables to Wire Tie Mounts with Cable Ties (see **Figure 3**).
6. Connect power cable to monitor's Power Transformer.
7. Mount Power Transformer on clean machine arm surface in location A as shown in **Figure 3** using two Cable Tie Holders and two Cable Ties.
8. Route USB, SVGA, and power cables through cable slots in Square Tube Arm (see **Figure 3**).
9. Connect USB cable from monitor to USB Extension Cable and SVGA cable from monitor to existing SVGA extension cable; route both extensions to controller and connect.

NOTE: USB connection can be made via any of the USB connectors the controller.

10. Route and connect monitor's power cable to the machine.

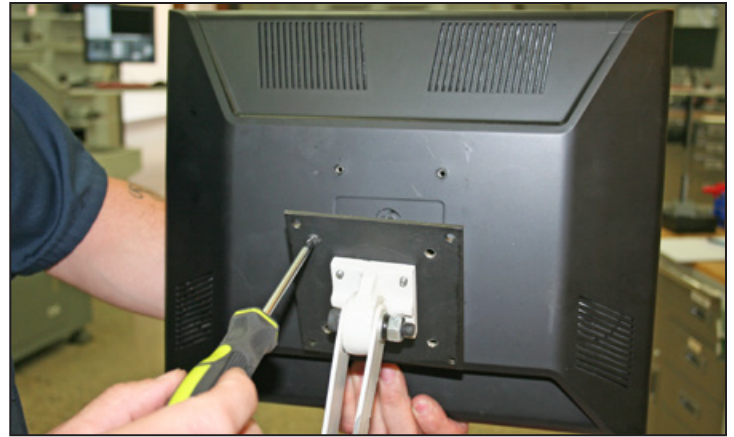


Figure 2

Machine Arm for Enclosure

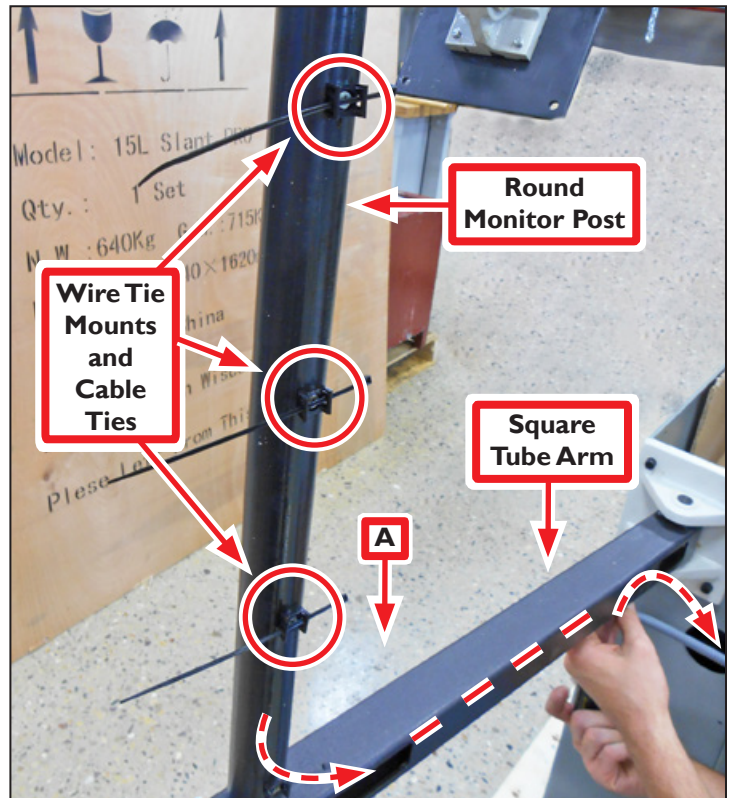


Figure 3

TECHNICAL DOCUMENT

Input Selection

1. Power on PathPilot controller.
2. If the screen displays an error message or a blue screen, toggle the Input Select button on the back of the monitor until input is set to VGA; press the volume Down button to save (see **Figure 4**).

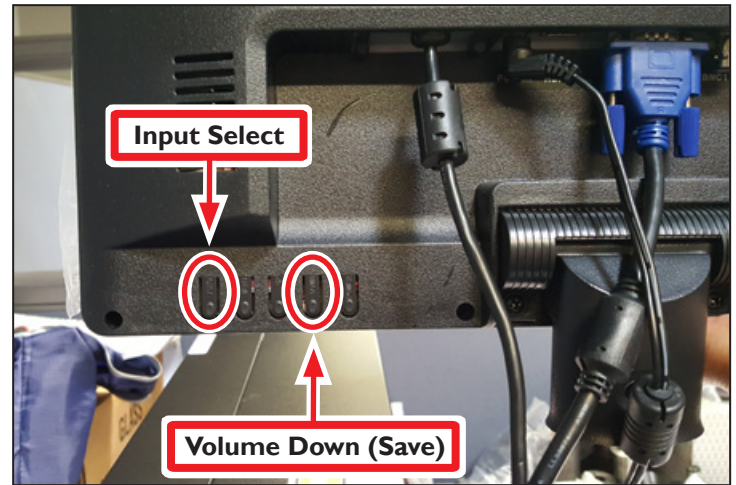


Figure 4

Calibration

1. In the PathPilot interface, click the *Main* tab (see **Figure 5**).
2. Type *ADMIN TOUCHSCREEN* in the MDI field and click Enter on keyboard (see **Figure 5**).
3. Following on-screen instructions, touch each point with one finger to calibrate monitor (see **Figure 6**).

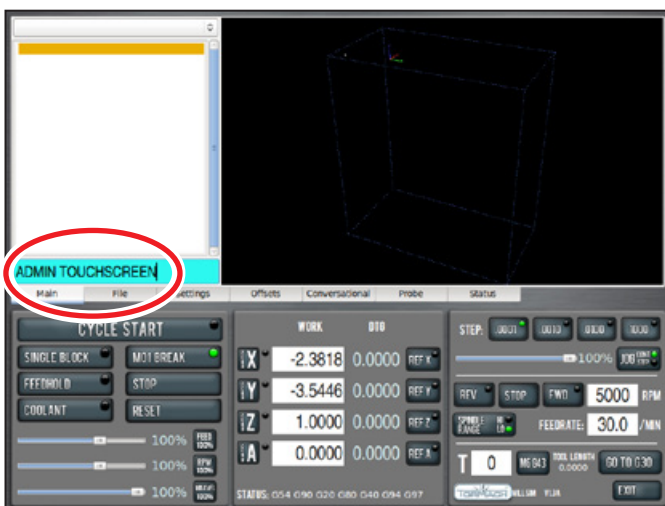


Figure 5

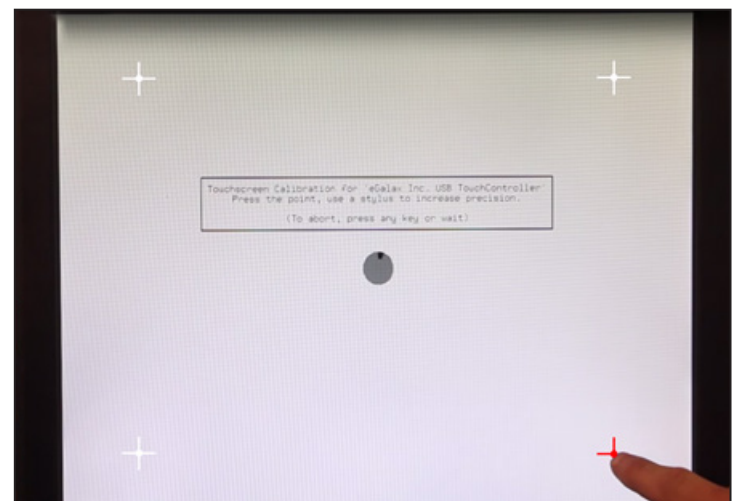


Figure 6