

RELEASE NOTES FOR PATHPILOT V2.4.3

March 2020

ENHANCEMENTS

All

- We reorganized the options for set start line on the **G-Code** tab. The most commonly used option is now listed first. (PP-2820)

FIXED ISSUES

All

- We fixed issues where:
 - In the **G-Code** tab, files with an M30 command included at the end of the program didn't automatically scroll back to the first line. (PP-2830)
 - Selecting either **Stop** or **Reset** didn't affect the playback of videos in an M01 comment. (PP-2819)
 - In some situations, selecting **Set start line (no preparation)** from the **G-Code** tab could have applied incorrect tool offsets. (PP-2813)
 - Creating a G-code file from a .dxf file added tool changes after M03 and M08 commands rather than before. (PP-2811)

Mills

- We fixed issues where:
 - G84 tapping cycles occasionally stalled after the spindle reversed directions. (PP-2818)
 - When using the **Spindle Override** slider, the **RPM** DRO field sometimes displayed a value higher than the machine's maximum rpm. (PP-2808)

RELEASE NOTES

MANAGE PATHPILOT VERSIONS



Note: You don't need to install updates sequentially. You can update from any previous version to the current version of PathPilot.

Depending on what you want to do, refer to the following sections:

- "Download and Install an Update File from the Controller" (below)
- "Install an Update File from a USB Drive" (below)
- "Install a Previous Version of an Update File" (on the next page)

2.1 DOWNLOAD AND INSTALL AN UPDATE FILE FROM THE CONTROLLER



Note: Downloading and installing an update file requires an Internet connection. From the PathPilot interface, confirm that the Internet button LED light is on.

1. Confirm that the PathPilot controller is powered on and out of **Reset** mode.
2. From the PathPilot interface, on the **Status** tab, select **Update**.



Figure 2-1: Update button on the Status tab.

3. From the **Software Update** dialog box, select **Check Online**.

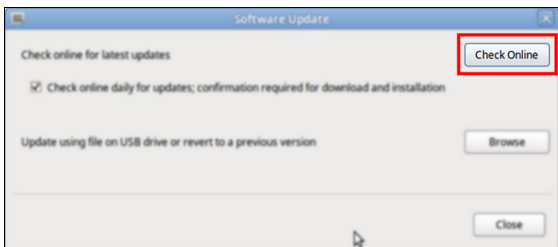


Figure 2-2: Software Update dialog box.

4. Select **Install**.

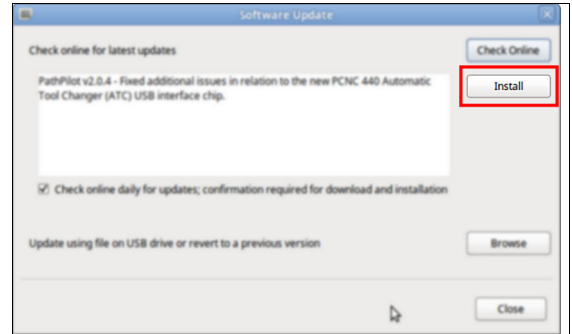


Figure 2-3: Install button on the Software Update dialog box.

The update file is downloaded, and a notification dialog box displays.

5. From the dialog box, select **OK**.

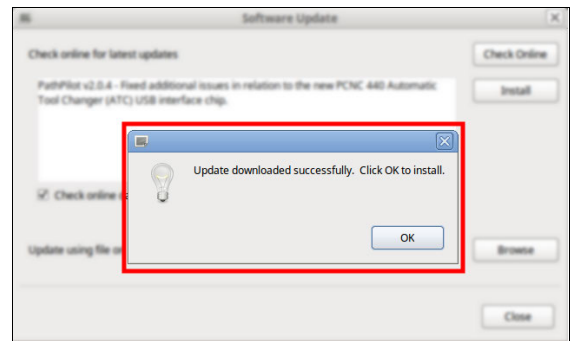


Figure 2-4: OK button on the dialog box.

The update file is installed on the PathPilot controller.

6. Follow the on-screen instructions to restart the PathPilot controller.

2.2 INSTALL AN UPDATE FILE FROM A USB DRIVE

1. From tormach.com/pp-updates, download the most recent PathPilot update file.
2. Transfer the PathPilot update file to a USB drive.
3. Put the USB drive into the PathPilot controller.
4. Confirm that the PathPilot controller is powered on and out of **Reset** mode.
5. From the PathPilot interface, on the **Status** tab, select **Update**.

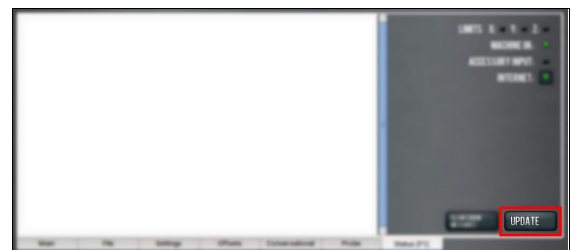


Figure 2-5: Update button on the Status tab.

RELEASE NOTES

- From the **Software Update** dialog box, select **Browse**.

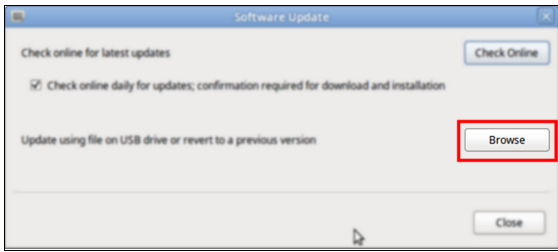


Figure 2-6: Software Update dialog box.

- From the **Browse** dialog box, select **USB**.



Figure 2-7: Browse dialog box.

- Select the desired update file, and then select **Update**.



Figure 2-8: Update button.

The update file is installed on the PathPilot controller.

- Follow the on-screen instructions to restart the PathPilot controller.

2.3 INSTALL A PREVIOUS VERSION OF AN UPDATE FILE

- Confirm that the PathPilot controller is powered on and out of **Reset** mode.
- From the PathPilot interface, on the **Status** tab, select **Update**.



Figure 2-9: Update button on the Status tab.

- From the **Software Update** dialog box, select **Browse**.

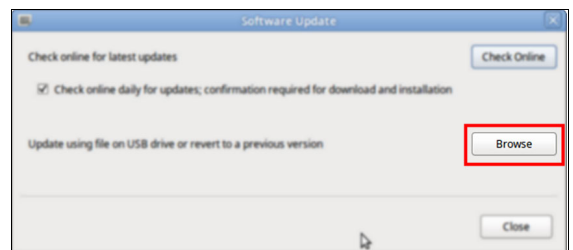


Figure 2-10: Software Update dialog box.

- From the **Browse** dialog box, select **Previous Versions**.

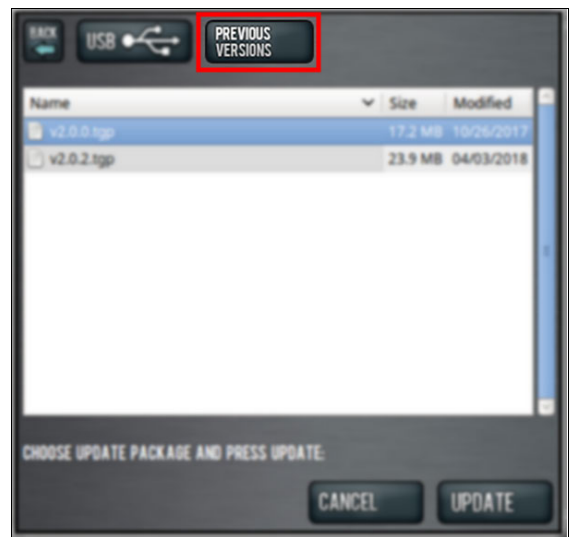


Figure 2-11: Browse dialog box.

RELEASE NOTES

5. Select the desired update file, and then select **Update**.



Figure 2-12: Update button.

The update file is installed on the PathPilot controller.

6. Follow the on-screen instructions to restart the PathPilot controller.