

Release Notes for PathPilot® v1.9.12

Release Date: August 2, 2017

NOTE: You do not need to install updates sequentially. Download the latest PathPilot update file to be completely up-to-date.

Enhancements

All Machines

- In the *File* tab, hidden files are no longer displayed by default.
Previously, these files were displayed as a temporary solution to a rare issue in which copying files over a network caused a system crash. That issue has been resolved, and the temporary solution is no longer needed.
- To be consistent with the *Cycle Start* button's operation, the spindle *FWD* and *REV* buttons have been enhanced so that they now only operate when you are in the *Main* tab. (PP-1624)

Mills

- In the *Drill/Tap* tab, in the *Location* table, mathematical expressions are now evaluated like they are in DRO fields. (PP-1070)

Lathe

- In the *Settings* tab, the *Keyboard Jogging Disable* checkbox has been removed. (PP-1488)

Fixed Issues

All Machines

- Creating G-code in *Conversational* should add M01 breaks after tool changes. (PP-1277)
- Copying files to PathPilot with hidden files causes a crash. (PP-1407)
- PathPilot does not start if custom thread data file is not present. (PP-1446)
- In the *File* tab, the list of files in the window resets and scrolls to the top of the list each time. (PP-1485)
- Conversational Edit: The *Insert File* button does not accept hand-coded G-code. (PP-1487)
- In the *Main* tab, double-clicking the G-code edit window does not correctly re-size with M01 image break. (PP-1490)

M01 break with image display does not operate in lathe configurations.

NOTE: For information on adding an image to comment lines, refer to [Release Notes for PathPilot v1.9.8](#).

SERVICE BULLETIN

- Spindle controls should only be operational while in the *Main* tab. (PP-1554)

This is how the *Cycle Start* button operates.

NOTE: *In lathe configurations, spindle controls are operational while in both the Main tab and the Offsets tab.*

- Cannot remove multiple selections involving directories. (PP-1582)
- *Feedrate Override* sliders can read zero percent when the feedrate is less than one percent, but not quite zero. (PP-1584)
- M00 picture display is a blank white screen. (PP-1600)
- Touch screen calibration settings are not saved with an *ADMIN SETTINGS BACKUP* or an *ADMIN SETTINGS RESTORE* command. (PP-1612)
- Netbios samba machine name is not saved with an *ADMIN SETTINGS BACKUP* or an *ADMIN SETTINGS RESTORE* command. (PP-1617)
- Job Assignment: Can't insert a CAM-generated G-code file. (PP-1632)
- The highlighted active line is incorrect at M01 after no motion. (PP-1636)

Mills

- Probing: The probe buttons do not operate if the axes' soft limits are shortened with either an *ADMIN SET_X_LIMIT* or an *ADMIN SET_Y_LIMIT* command. (PP-1199)
- ATC: Crash into spindle is possible when loading a tool that is not assigned to the tray. (PP-1552)

Lathe

- Conversational Threading: Generates the wrong tool path with the quick change tool post. (PP-1491)
- Conversational Threading: The focus chain does not go to all DRO fields. (PP-1503)
- Only supports one USB I/O board. (PP-1512)
- An F1 shortcut key to toggle between the current tab and the *Status* tab is missing from lathe configurations. (PP-1595)

SERVICE BULLETIN

Updating Software

NOTE: You do not need to install updates sequentially. Download the latest PathPilot update file to be completely up-to-date.

1. From tormach.com/updates, download the most recent PathPilot update file.
2. Transfer the PathPilot update file to a USB drive.
3. On the PathPilot controller, insert the USB drive in any open USB port.
4. Make sure the PathPilot controller is on and out of *Reset* mode.
5. From the PathPilot interface, on the *Status* tab, click the *Update* button (see **Figure 1**).

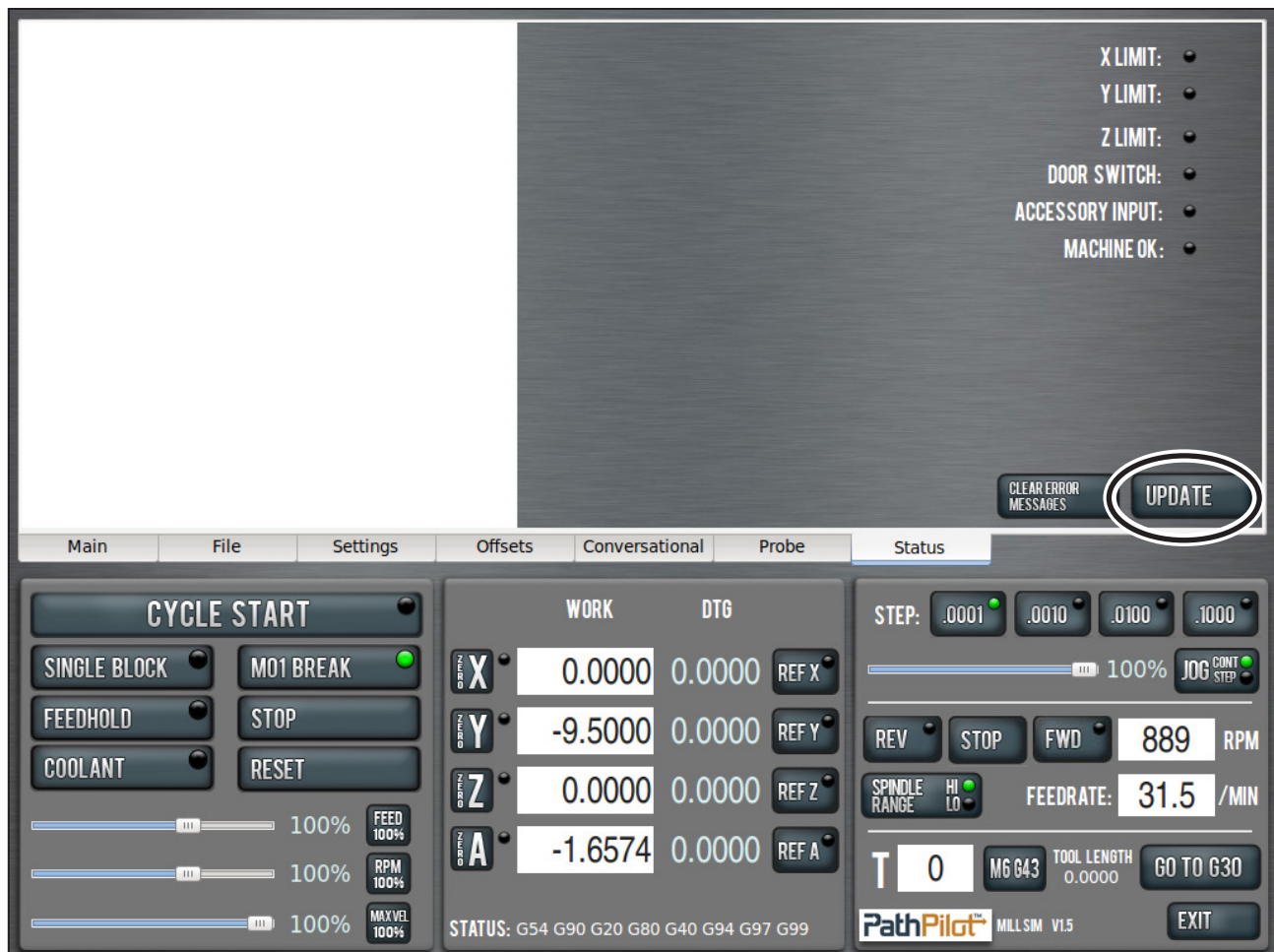


Figure 1

SERVICE BULLETIN

6. Select the PathPilot update file on the USB drive and click *Update* (see **Figure 2**).

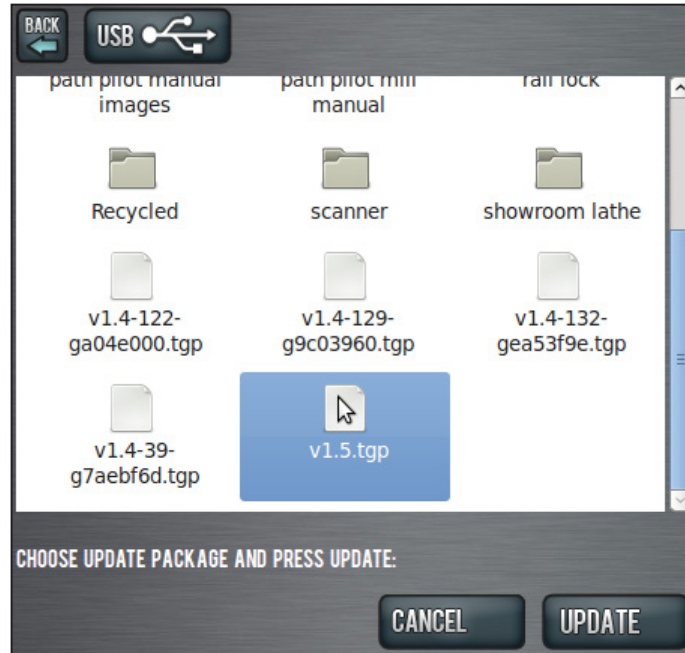


Figure 2

7. When prompted, push in the red Emergency Stop button and click *OK* (see **Figure 3**).

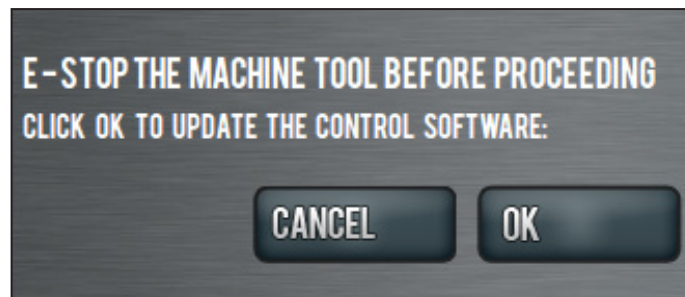


Figure 3