

RELEASE NOTES

Release Notes for PathPilot® v2.0.1

Release Date: January 9, 2018

FIXED ISSUES

All Machines

- Some files are not correctly recognized as G-code, and the **File** tab will not load them. (PP-1887)

Mills

- Resolved a RapidTurn® pausing issue when using G-codes dependent on spindle speed sensing.

Lathe

- Resolved a rare G96 arc blend following error.

RELEASE NOTES

PathPilot® Updates

NOTE: You don't need to install updates sequentially.

- Install the latest PathPilot® update file to be completely up-to-date.

To update and manage versions of PathPilot® on the controller, you can do any of the following:

- "Download and Install an Update File" (below)
- "Install an Update File from a USB Drive" (below)

2.1 DOWNLOAD AND INSTALL AN UPDATE FILE

NOTE: Downloading and installing an update file requires an Internet connection. Make sure that the **Internet** button LED light is on.

- Make sure that the PathPilot® controller is powered on and out of **Reset** mode.
- From the PathPilot® interface, on the **Status** tab, click **Update**.

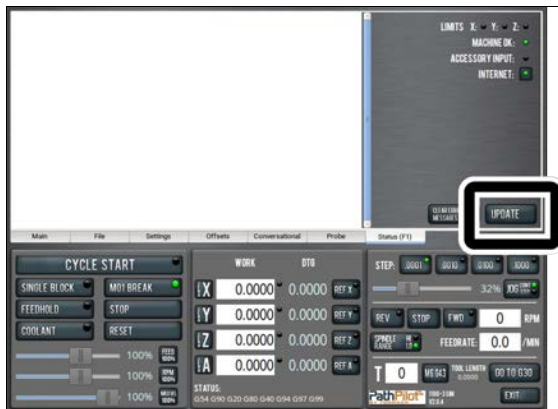


Figure 2-1: Update button on the Status tab.

- From the **Software Update** dialog box, click **Check Online**.

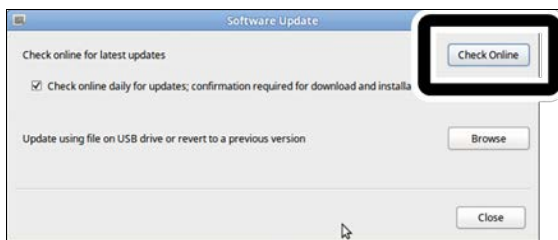


Figure 2-2: Software Update dialog box.

- Click **Install**.

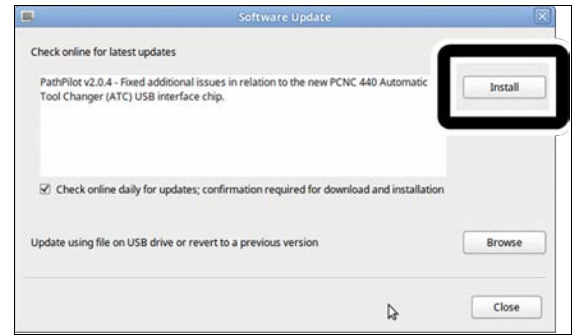


Figure 2-3: Install button on the Software Update dialog box.

The update file is downloaded.

- From the dialog box, click **OK**.

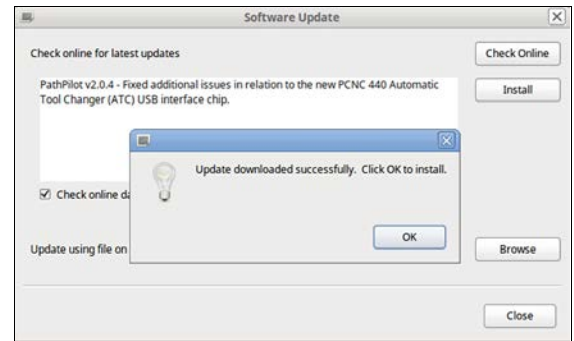


Figure 2-4: OK button on the dialog box.

The update file is installed on the PathPilot® controller.

- Follow the instructions on the screen to restart the PathPilot® controller.

2.2 INSTALL AN UPDATE FILE FROM A USB DRIVE

- From tormach.com/pp-updates, download the most recent PathPilot® update file.
- Transfer the PathPilot® update file to a USB drive.
- Insert the USB drive into the PathPilot® controller.
- Make sure that the PathPilot® controller is powered on and out of **Reset** mode.

RELEASE NOTES

- From the PathPilot® interface, on the **Status** tab, click **Update**.

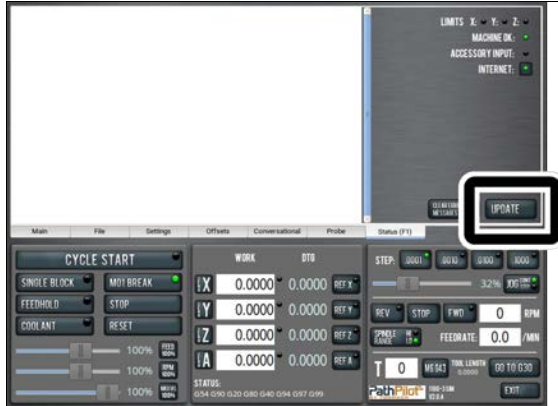


Figure 2-5: Update button on the Status tab.

- From the **Software Update** dialog box, click **Browse**.

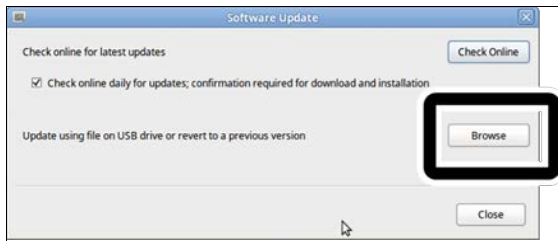


Figure 2-6: Software Update dialog box.

- From the **Browse** dialog box, click **USB**.

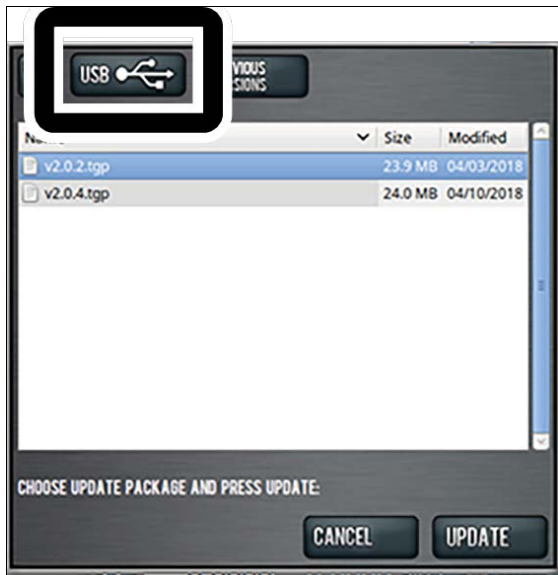


Figure 2-7: Browse dialog box.

- Select the desired update file. Then, click **Update**.

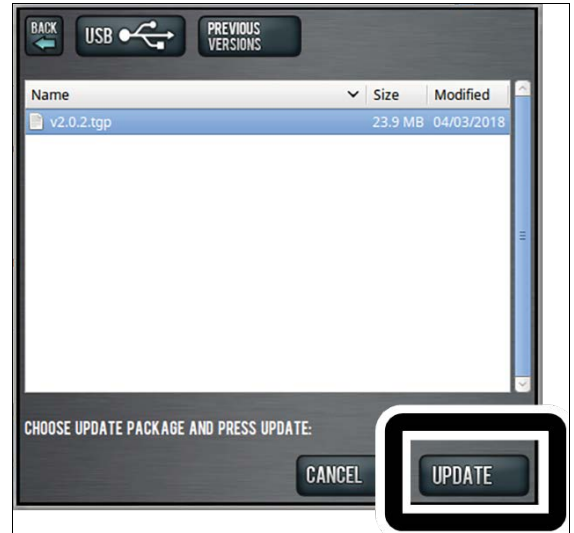


Figure 2-8: Update button.

The update file is installed on the PathPilot® controller.

- Follow the instructions on the screen to restart the PathPilot® controller.