

Release Notes for PathPilot® v2.1.1

June 2018

ENHANCEMENTS

All

- Added an option to import and export the tool table as a .csv file (PP-1906)
- When editing conversational job assignments, the G-code preview now uses the same syntax highlighting and line numbering as the G-code preview on the **Main** tab (PP-2091)
- If a touch screen is installed, the calibration utility is automatically started during the initial setup (PP-2120)
- Added tooltips to provide detailed information for many areas of the interface (PP-2130)
- To make it easier to update the software, added a network name to the file name of the automatic settings backup (PP-2135)
- If the network name is changed, the network file sharing is now automatically restarted, and doesn't require a power cycle (PP-2136)
- Improved the diagnostic ability when using more than one USB M-Code I/O Interface Kit (PP-2142)
- To see the time, you can now click the PathPilot® logo. Right-click the time to adjust it if it's incorrect. (PP-2169)

Mills

- We expanded the tool table to allow up to 1000 tools (PP-1913)
- In the **Probe** tab, there's now an option to probe the inside corner of a part (PP-2011)
- We added support for 1100M® and 770M® mills (PP-2134)

FIXED ISSUES

All

- We added error messages that display if a USB M-Code I/O Interface Kit is enabled, but not properly connected or detected, to prevent starting a G-code program with integration M-code that's dependent on the USB M-Code I/O Interface Kit (PP-839, PP-1530)
- We fixed issues where:
 - By default, Samba shares with Windows 10 didn't work (PP-1858)
 - M98 sometimes called the subroutine fewer or more times than the L word called for (PP-1969)
 - Our error suppression logic hid a warning on the toolpath preview (PP-2073)
 - The **Zero Height Gauge** button was missing from the **Offsets** tab, so we restored the button for use with a height gauge (PP-2093)
 - In rare situations, trajectory planning didn't properly fall back to parabolic blending, which resulted in a brief pause (PP-2104)
 - When using a touch screen, it briefly lost calibration during a software update (PP-2119)
 - When editing conversational program files, G59 .n work offsets were reset to G59 (PP-2187)
- We now consistently treat the **ENTER** key on an extended keyboard (next to the numeric keypad) the same as the normal **ENTER** key (PP-2102)



RELEASE NOTES

- In the **Tool Table**, we added search functionality for tool descriptions (PP-2144)

To search for a tool description:

1. On the **Tool Table**, click a tool number. Then, type the desired text to search.
A search box appears, and the **Tool Table** scrolls to the first tool description that matches the search.
2. *(Optional)* Use the **UP ARROW** or the **DOWN ARROW** to move between search matches.
3. Press **ENTER** on the keyboard to stop searching.

Mills

- When using an Automatic Tool Changer (ATC), we fixed issues where:
 - After the first tool change, the **Find Rectangular Boss Center** routine from the **Probe** tab failed (PP-1777)
 - After manually changing a tool, the tool assignment wasn't removed from the tool tray, even if indicated (PP-2050)
- We fixed issues where:
 - When using conversational programming to make a pocket routine, the feed rate was sometimes output as zero (PP-1998)
 - When using an A word, a 360 degree G2 move had a feedrate lower than the F word (PP-2085)
 - When using DXF in conversational programming, a Z move was sometimes commanded before the first tool change and a G43 offset was applied (PP-2121)
- We added support for an alternate USB interface chip that's used with an ATC (PP-2179)

Lathe

- In conversational profiling, we fixed an issue where an error was received if the profile wasn't complete to the edge of the stock (PP-2103)

RELEASE NOTES

PathPilot® Updates

NOTE: You don't need to install updates sequentially.

- Install the latest PathPilot® update file to be completely up-to-date.

To update and manage versions of PathPilot® on the controller, you can do any of the following:

- "Download and Install an Update File" (below)
- "Install an Update File from a USB Drive" (below)

2.1 DOWNLOAD AND INSTALL AN UPDATE FILE

NOTE: Downloading and installing an update file requires an Internet connection. Make sure that the **Internet** button LED light is on.

- Make sure that the PathPilot® controller is powered on and out of **Reset** mode.
- From the PathPilot® interface, on the **Status** tab, click **Update**.

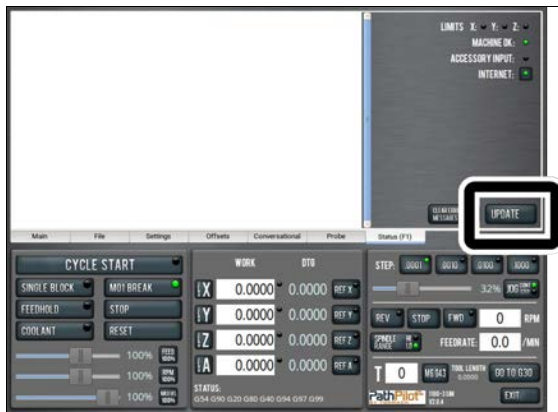


Figure 2-1: Update button on the Status tab.

- From the **Software Update** dialog box, click **Check Online**.

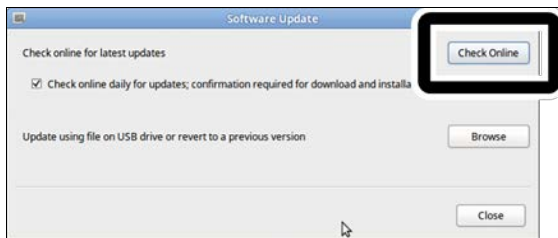


Figure 2-2: Software Update dialog box.

- Click **Install**.

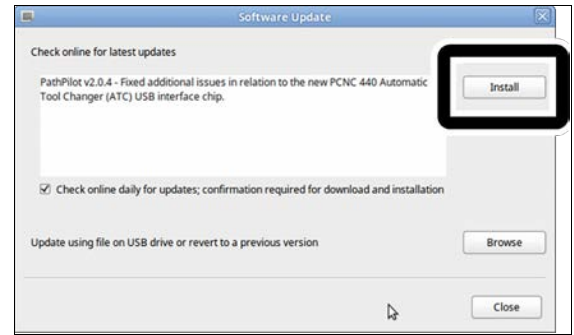


Figure 2-3: Install button on the Software Update dialog box.

The update file is downloaded.

- From the dialog box, click **OK**.

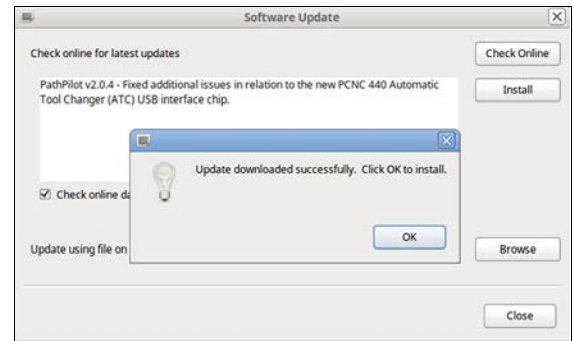


Figure 2-4: OK button on the dialog box.

The update file is installed on the PathPilot® controller.

- Follow the instructions on the screen to restart the PathPilot® controller.

2.2 INSTALL AN UPDATE FILE FROM A USB DRIVE

- From tormach.com/ppupdates, download the most recent PathPilot® update file.
- Transfer the PathPilot® update file to a USB drive.
- Insert the USB drive into the PathPilot® controller.
- Make sure that the PathPilot® controller is powered on and out of **Reset** mode.

RELEASE NOTES

- From the PathPilot® interface, on the **Status** tab, click **Update**.

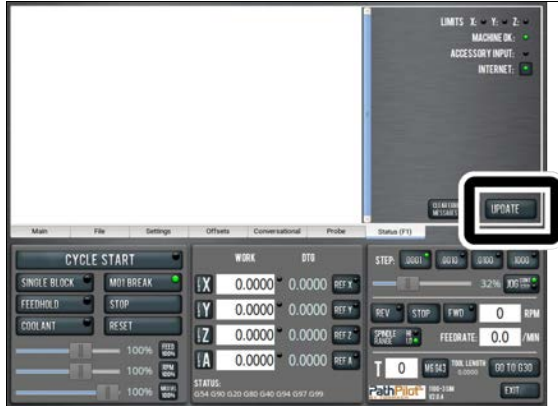


Figure 2-5: Update button on the Status tab.

- From the **Software Update** dialog box, click **Browse**.

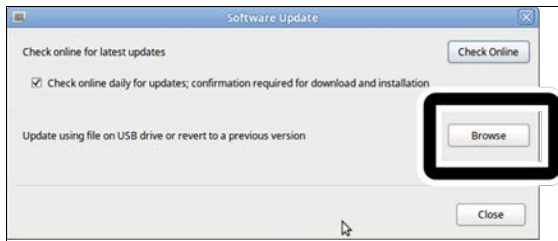


Figure 2-6: Software Update dialog box.

- From the **Browse** dialog box, click **USB**.

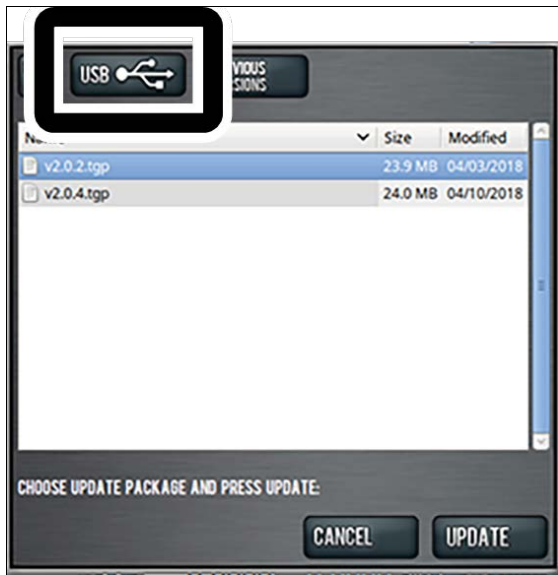


Figure 2-7: Browse dialog box.

- Select the desired update file. Then, click **Update**.

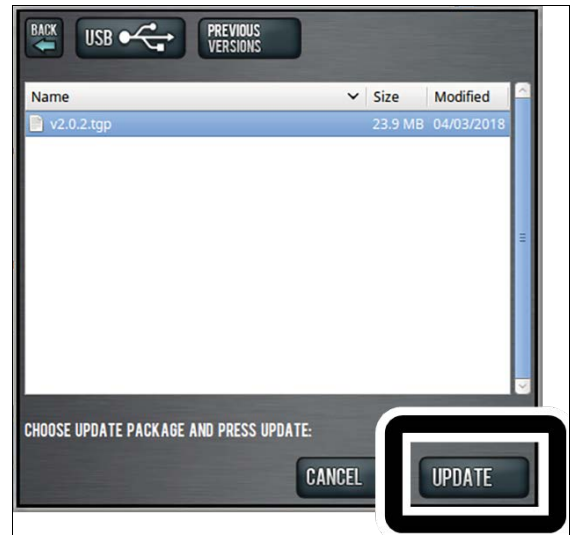


Figure 2-8: Update button.

The update file is installed on the PathPilot® controller.

- Follow the instructions on the screen to restart the PathPilot® controller.