

RELEASE NOTES

RELEASE NOTES FOR PATHPILOT V2.1.6

December 2018

ENHANCEMENTS

All

- You can now read information about all available G-code modes by hovering over the items in the G-Code Description window on the Settings tab. (PP-2258)
- If there's an available network adapter, PathPilot now finds it as the controller powers on. To improve the out-of-box experience, we added an alert offering to use it to set up the network. (PP-2292)
- We maximized the file storage on the PathPilot controller's internal drive by growing the partition and file system in-place. This results in a program storage increase of over 75 GB on most controllers. (PP-2301)
- Warnings for zero-length tools (on a mill) or tools with the default tip orientation 9 (on a lathe) are now suppressed if a file of the same name is loaded. (PP-2304)
- In Conversational threading, the Quick Reference drop-down now lists an option for SAE 5/16-18. (PP-2309)
- When an axes' work offset value is changed, the Status tab now displays a message with the old and new values. (PP-2314)
- We changed the label above the axes' Work Offset DRO fields to display the current work coordinate system as a reminder. (PP-2315)

Mills

- We added support for the Door Lock Switch Kit (PN 38283). (PP-2166)
- When coordinate rotation is active, the text in the X-axis Work Offset DRO field and Y-axis Work Offset DRO field now displays in an italic font. (PP-2307)
- After enabling an Enclosure Door Switch Kit (PN 35550), an LED displays on the Status tab. For clarity, we changed its label from Door Switch to Door Open. (PP-2311)
- If air pressure is momentarily below the minimum requirement while using an Automatic Tool Changer (ATC), tool change reliability is now improved. (PP-2326)

FIXED ISSUES

All

- We fixed issues where:
 - A G-code file with blank lines before the first % line sometimes didn't display the image or comment in a M00 or M01 break. (PP-2259)
 - G90.1 and G91.1 didn't display in the Status read-only DRO field. (PP-2298)
 - The View Options tab didn't expand correctly when the G-Code window was expanded. (PP-2302)

RELEASE NOTES

- We added support for Dropbox for Business accounts. The sync folder now appears on the File tab using the Dropbox for Business team's name. (PP-2303)

Mills

- We fixed issues where:
 - PathPilot ignored door switch functionality while in RapidTurn mode. (PP-1757)
 - Manually changing a tool with an Enclosure Door Switch Kit required you to select Cycle Start twice in order to resume program execution. (PP-2312)
 - Loading a large .dxf file sometimes timed out with a dbus error. (PP-2313)

RELEASE NOTES

MANAGE PATHPILOT VERSIONS

Note: You don't need to install updates sequentially.



You can update from any previous version to the current version of PathPilot.

Depending on what you want to do, refer to the following sections:

- "Download and Install an Update File" (below)
- "Install an Update File from a USB Drive" (below)
- "Install a Previous Version of an Update File" (on the next page)

2.1 DOWNLOAD AND INSTALL AN UPDATE FILE

Note: Downloading and installing an update file requires an Internet connection. From the PathPilot interface, make sure that the Internet button LED light is on.

1. Make sure that the PathPilot controller is powered on and out of **Reset** mode.
2. From the PathPilot interface, on the **Status** tab, select **Update**.



Figure 2-1: Update button on the Status tab.

3. From the **Software Update** dialog box, select **Check Online**.

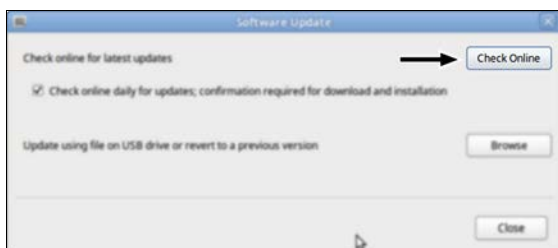


Figure 2-2: Software Update dialog box.

4. Select **Install**.



Figure 2-3: Install button on the Software Update dialog box.

The update file is downloaded, and a notification dialog box displays.

5. From the dialog box, select **OK**.

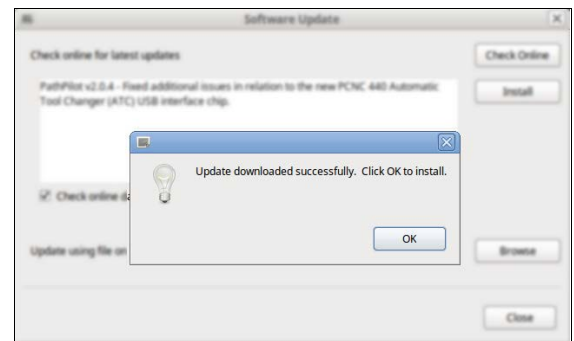


Figure 2-4: OK button on the dialog box.

The update file is installed on the PathPilot controller.

6. Follow the on-screen instructions to restart the PathPilot controller.

2.2 INSTALL AN UPDATE FILE FROM A USB DRIVE

1. From tormach.com/pp-updates, download the most recent PathPilot update file.
2. Transfer the PathPilot update file to a USB drive.
3. Put the USB drive into the PathPilot controller.
4. Make sure that the PathPilot controller is powered on and out of **Reset** mode.

RELEASE NOTES

- From the PathPilot interface, on the **Status** tab, select **Update**.



Figure 2-5: Update button on the Status tab.

- From the **Software Update** dialog box, select **Browse**.

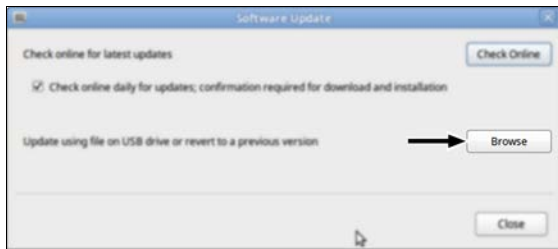


Figure 2-6: Software Update dialog box.

- From the **Browse** dialog box, select **USB**.



Figure 2-7: Browse dialog box.

- Select the desired update file, and then select **Update**.

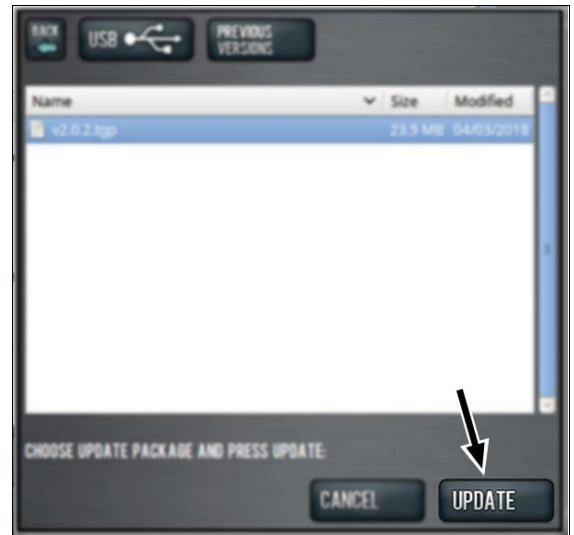


Figure 2-8: Update button.

The update file is installed on the PathPilot controller.

- Follow the on-screen instructions to restart the PathPilot controller.

2.3 INSTALL A PREVIOUS VERSION OF AN UPDATE FILE

- Make sure that the PathPilot controller is powered on and out of **Reset** mode.
- From the PathPilot interface, on the **Status** tab, select **Update**.

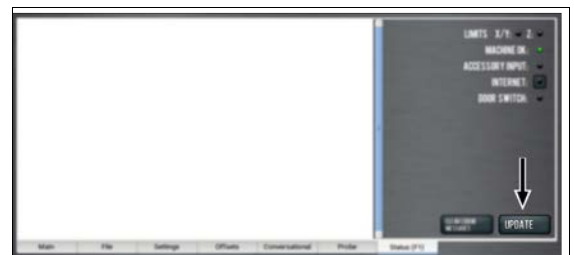


Figure 2-9: Update button on the Status tab.

- From the **Software Update** dialog box, select **Browse**.

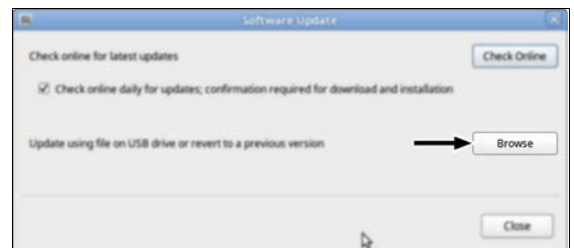


Figure 2-10: Software Update dialog box.

RELEASE NOTES

- From the **Browse** dialog box, select **Previous Versions**.

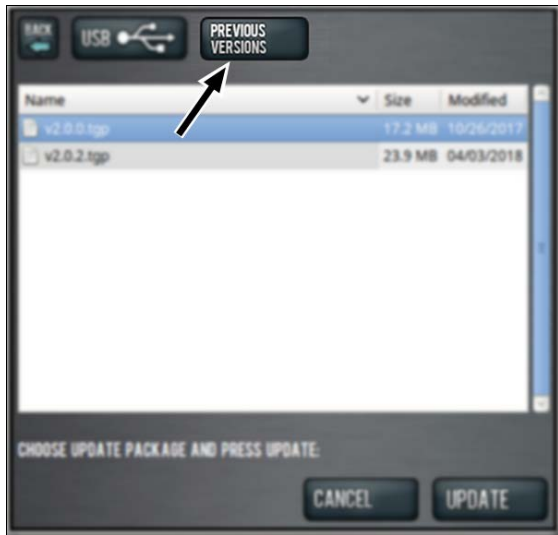


Figure 2-11: Browse dialog box.

- Select the desired update file, and then select **Update**.



Figure 2-12: Update button.

The update file is installed on the PathPilot controller.

- Follow the on-screen instructions to restart the PathPilot controller.