

## RELEASE NOTES FOR PATHPILOT V2.10.1

Winter 2023

### FIXED ISSUES

#### All

We fixed issues where:

- Inserting steps during a job assignment in conversational editing would fail. (PP-4157).
- A button's text (Cancel Conversational Edit) was difficult to read. (PP-4158).
- Some line segments in DXF files were incorrectly rendered. (PP-4160)
- With a non-conversational G-code file loaded, pressing the Alt+Shift+E keys on the keyboard didn't bring up the job assignment session and insert the file as a step. (PP-4162).
- When duplicating a step in conversational editing, selecting the Save button saved the duplicated step to a new file (called Untitled.nc) instead of saving it into the existing file. (PP-4164).
- The on-screen keyboard didn't display in landscape mode while enabled and with the keyboard focus in an editable field. (PP-4187)

#### Mills

We fixed issues where:

- Pressing the Alt+F keys on the keyboard (shortcut for flood coolant) caused an error. (PP-4173).
- RapidTurn configurations weren't working. (PP-4175).
- The Spindle Override 100% button had no effect. (PP-4176).

#### Lathes

- We fixed an issue where 15L lathes didn't wait for the spindle to stop before executing M10 after M5. (PP-4009).

## MANAGE PATHPILOT VERSIONS

You don't need to install updates sequentially. You can update from any previous version to the current version of PathPilot. Depending on what you want to do, refer to the following sections:

- "Download and Install an Update File from the Controller" (below)
- "Install an Update File from a USB Drive" (on the next page)
- "Install a Previous Version of an Update File" (page 4)

## DOWNLOAD AND INSTALL AN UPDATE FILE FROM THE CONTROLLER

1. Confirm that the PathPilot controller is powered on and out of **Reset** mode.
2. Downloading and installing an update file requires an Internet connection. From the **Status** tab, confirm that the **Internet** button LED light is on. Then, select **Update**.



Figure 1: Update button on the Status tab.

3. From the **Software Update** dialog box, select **Check Online**.

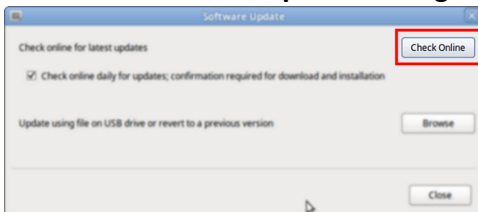


Figure 2: Software Update dialog box.

4. Select **Install**.

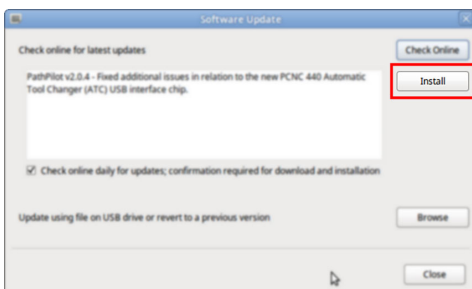


Figure 3: Install button on the Software Update dialog box.

The update file is downloaded, and a notification dialog box displays.

5. From the dialog box, select **OK**.

# INSTALL AN UPDATE FILE FROM A USB DRIVE

The update file is installed on the PathPilot controller.

6. Follow the on-screen instructions to restart the PathPilot controller.

## INSTALL AN UPDATE FILE FROM A USB DRIVE

1. From the [PathPilot support center](#), download the most recent PathPilot update file.
2. Transfer the PathPilot update file to a USB drive.
3. Put the USB drive into the PathPilot controller.
4. Confirm that the PathPilot controller is powered on and out of **Reset** mode.
5. From the **Status** tab, select **Update**.

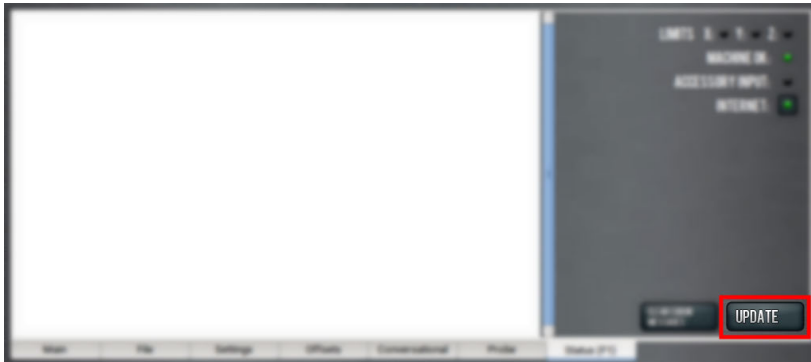


Figure 4: Update button on the Status tab.

6. From the **Software Update** dialog box, select **Browse**.

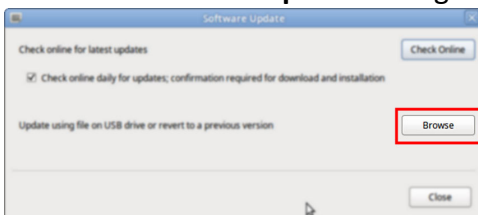


Figure 5: Software Update dialog box.

7. From the **Browse** dialog box, select **USB**.



Figure 6: Browse dialog box.

# INSTALL A PREVIOUS VERSION OF AN UPDATE FILE

8. Select the desired update file, and then select **Update**.  
The update file is installed on the PathPilot controller.
9. Follow the on-screen instructions to restart the PathPilot controller.

## INSTALL A PREVIOUS VERSION OF AN UPDATE FILE

1. Confirm that the PathPilot controller is powered on and out of **Reset** mode.
2. From the **Status** tab, select **Update**.

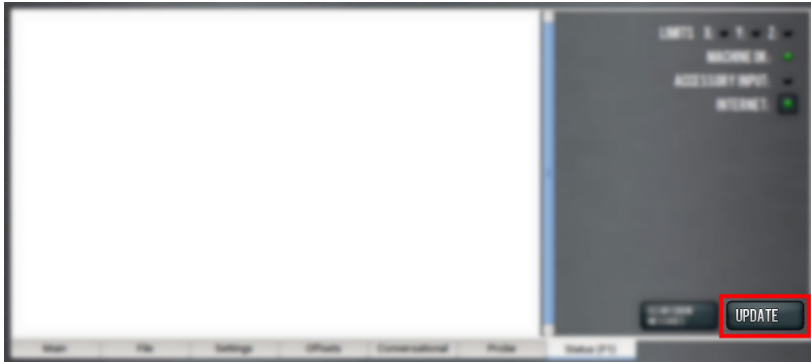


Figure 7: Update button on the Status tab.

3. From the **Software Update** dialog box, select **Browse**.

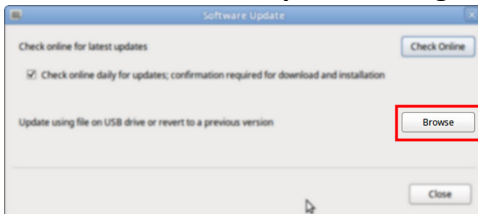


Figure 8: Software Update dialog box.

4. From the **Browse** dialog box, select **Previous Versions**.

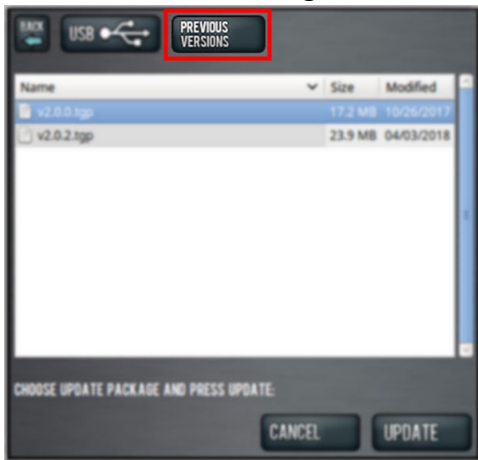


Figure 9: Browse dialog box.

5. Select the desired update file, and then select **Update**.  
The update file is installed on the PathPilot controller.
6. Follow the on-screen instructions to restart the PathPilot controller.