

RELEASE NOTES FOR PATHPILOT V2.2.0

April 2019

ENHANCEMENTS

All

- After you press the Stop button, the G-Code window now displays the last line that PathPilot executed. (PP-1755)
- You can now update PathPilot or transfer log files (for troubleshooting) to a USB drive from the Tormach Machine Controller Configuration screen. (PP-2358)
- You can now try to calibrate any touch screen, even if we haven't tested it or added support for it. (PP-2364)
- The Tormach Machine Controller Configuration screen now displays images and descriptions of each machine to help you make the correct selection. (PP-2427)

Mills

- You can now override the feed rate or spindle speed by up to 200%. Previously, the maximum was 150%. (PP-2275)
- In addition to Z offsets, G43 now applies X and Y offsets. (PP-2402)
- We added support for 1100M+ and 770M+ mills. (PP-2420)
- We added support to the ATC firmware for a BT30 spindle. (PP-2429)
- We included G-code subroutines for Fusion 360™ probing (provided by David Loomes). (PP-2440)
For information, go to the PathPilot folder **f360_probe**, and open the file **README.txt**.
- We added a Show Tools drop-down menu above the Tool Table window. (PP-2464)
You can now filter tools based on:
 - Tools used in the currently loaded G-code file
 - Tools with descriptions
- We added a Search field above the Tool Table window to improve search functionality for tool descriptions. You can now type searches in any letter case, search for any word in the description, or search for other tool characteristics (like tool number, diameter, or length). (PP-2465)

Lathe


- PathPilot now confirms that the collet is clamped when it reaches an M3 or M4 command. Previously, it confirmed when you selected Cycle Start. This means that you no longer need to clamp the collet before you select Cycle Start. (PP-2399)

FIXED ISSUES

All

- We fixed issues where:
 - By default, Samba shares with Windows 10 didn't work. (PP-1858)
 - If a folder had a space in its name, the file chooser displayed that there was no free space in that directory. (PP-2342)

RELEASE NOTES

- Selecting Set Start Line in a G-code program was off by one line. For example, if you set the new start line to line 6, the program started on line 5. (PP-2346)
- Using the Admin Settings Backup command didn't include tools 256 through 1000 from the Tool Table window. (PP-2397)
- PathPilot displayed the G-code status after the controller powered on, but before you initially selected Reset. (PP-2457)
- When the enclosure doors are open, we changed the default maximum spindle speed to 0 rpm. (PP-2433)
To change the maximum spindle speed:
 - In the **MDI Line** DRO field, type `ADMIN OPENDOORMAXRPM [MAXIMUM SPINDLE SPEED]`.
- If you're working with a G-code program that's larger than 100,000 lines, you can now load all tool path preview lines. (PP-2455)
To load all tool path preview lines:
 - From the **Main** tab, on the **G-Code** tab, do one of the following:
 - Right-click anywhere in the window. Then, select **Load All Preview Lines**.
 - Tap anywhere in the window. From the **Options**  menu, select **Load All Preview Lines**.

Mills

- We fixed issues where:
 - An M7 command didn't actuate a MultiCool mist on 1100M or 770M mills. (PP-2355)
 - In some situations, SmartCool stopped responding to G-code commands. (PP-2393)
 - Canceling a tool change on a mill with no Automatic Tool Changer (ATC) installed displayed error messages for an ATC. (PP-2396)
 - The RapidTurn configuration for an 1100M mill used 9.5 in. of Y-axis travel rather than 11 in. of Y-axis travel. (PP-2405)
 - When creating a routine in Conversational using the same tool, the Z-axis didn't move to the clearance location between pocket routines. (PP-2415)

Lathe

- We fixed an issue where, after a door open error, the spindle didn't start through a command in the MDI Line DRO field. (PP-694)

RELEASE NOTES

MANAGE PATHPILOT VERSIONS



Note: You don't need to install updates sequentially. You can update from any previous version to the current version of PathPilot.

Depending on what you want to do, refer to the following sections:

- "Download and Install an Update File" (below)
- "Install an Update File from a USB Drive" (below)
- "Install a Previous Version of an Update File" (on the next page)

2.1 DOWNLOAD AND INSTALL AN UPDATE FILE



Note: Downloading and installing an update file requires an Internet connection. From the PathPilot interface, confirm that the Internet button LED light is on.

1. Confirm that the PathPilot controller is powered on and out of **Reset** mode.
2. From the PathPilot interface, on the **Status** tab, select **Update**.

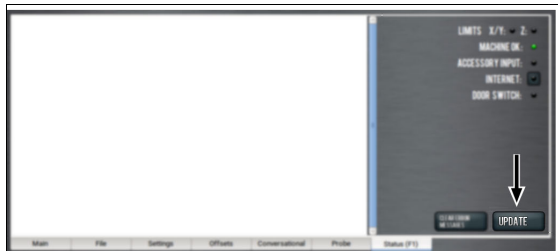


Figure 2-1: Update button on the Status tab.

3. From the **Software Update** dialog box, select **Check Online**.

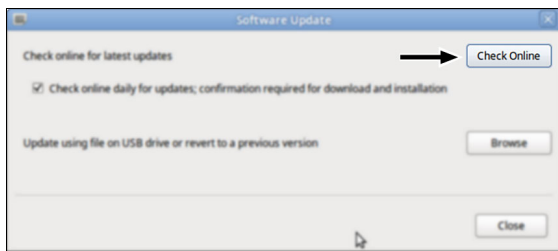


Figure 2-2: Software Update dialog box.

4. Select **Install**.

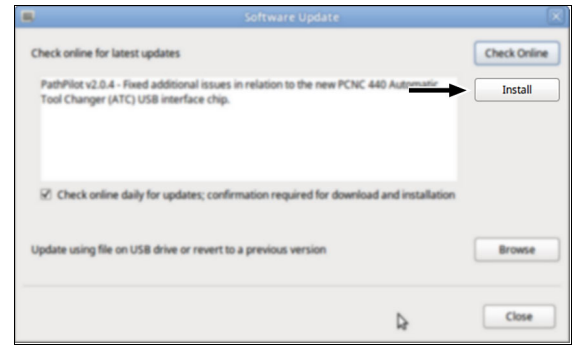


Figure 2-3: Install button on the Software Update dialog box.

The update file is downloaded, and a notification dialog box displays.

5. From the dialog box, select **OK**.

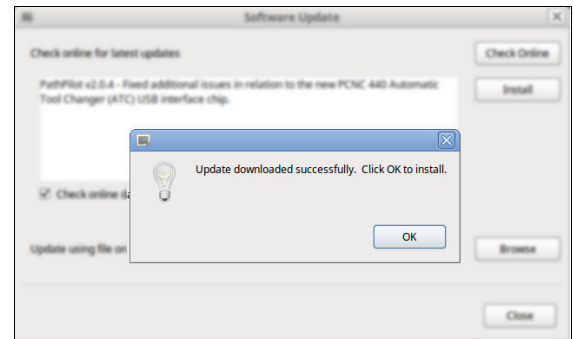


Figure 2-4: OK button on the dialog box.

The update file is installed on the PathPilot controller.

6. Follow the on-screen instructions to restart the PathPilot controller.

2.2 INSTALL AN UPDATE FILE FROM A USB DRIVE

1. From tormach.com/pp-updates, download the most recent PathPilot update file.
2. Transfer the PathPilot update file to a USB drive.
3. Put the USB drive into the PathPilot controller.
4. Confirm that the PathPilot controller is powered on and out of **Reset** mode.

RELEASE NOTES

- From the PathPilot interface, on the **Status** tab, select **Update**.



Figure 2-5: Update button on the Status tab.

- From the **Software Update** dialog box, select **Browse**.

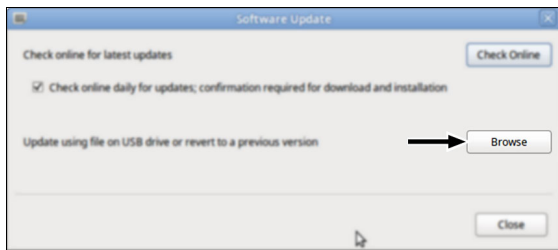


Figure 2-6: Software Update dialog box.

- From the **Browse** dialog box, select **USB**.



Figure 2-7: Browse dialog box.

- Select the desired update file, and then select **Update**.



Figure 2-8: Update button.

The update file is installed on the PathPilot controller.

- Follow the on-screen instructions to restart the PathPilot controller.

2.3 INSTALL A PREVIOUS VERSION OF AN UPDATE FILE

- Confirm that the PathPilot controller is powered on and out of **Reset** mode.
- From the PathPilot interface, on the **Status** tab, select **Update**.

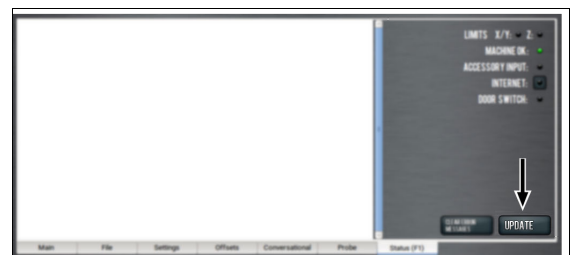


Figure 2-9: Update button on the Status tab.

- From the **Software Update** dialog box, select **Browse**.

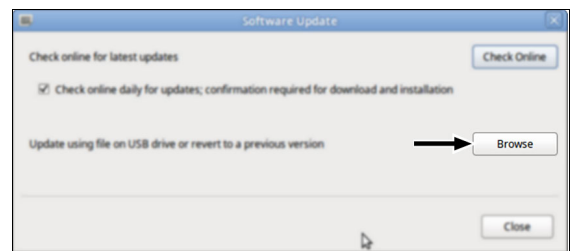


Figure 2-10: Software Update dialog box.

RELEASE NOTES

- From the **Browse** dialog box, select **Previous Versions**.

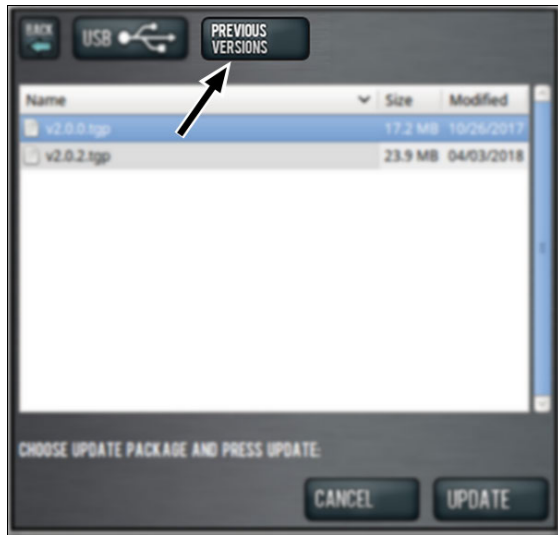


Figure 2-11: Browse dialog box.

- Select the desired update file, and then select **Update**.



Figure 2-12: Update button.

The update file is installed on the PathPilot controller.

- Follow the on-screen instructions to restart the PathPilot controller.