

RELEASE NOTES FOR PATHPILOT V2.2.4

July 2019

ENHANCEMENTS

All

- The G-Code tab now only highlights (in orange) the line of code that PathPilot is currently executing. In single block mode, after completing one line of code, it highlights the next that will execute when you select Cycle Start. (PP-2515)
- We simplified the use of tool path history lines in the Tool Path display. Now, when you select Cycle Start, the lines remain if you set a start line other than the first line of the G-code file. In all other cases, the lines are cleared when you select Cycle Start. (PP-2519)
- The tool path history now reflects the tool selections made on the View Options tab in the G-Code window. (PP-2523)
- We improved reliability when updating G-code files from another computer over the network in the following situations:
 - When you save a new version of the currently loaded G-code file, and it's replaced on the controller. (PP-2524)
 - When you save a new version of the currently executing G-code file, and it must be reloaded on the controller. (PP-2525)
- We improved the keyboard shortcuts for the MDI Line DRO field (PP-2540):
 - If a command has an error and the Status tab opens, you can now use Alt+Enter to return to the MDI Line DRO field.
 - If you're done typing commands, you can now select the Enter key to remove the focus from the MDI Line DRO field (for example, to jog the machine using the keyboard).

FIXED ISSUES

All

- We fixed issues where:
 - While in RapidTurn mode, the Update button was unresponsive. (PP-2486)
 - When changing to tool 0 and selecting M6 G43, the tool length offset of the previously used tool remained. (PP-2488)
 - Error messages related to the Tool Table window didn't display in the correct units. (PP-2491)
 - A program that ended in M30 didn't scroll the G-Code tab back to the first line of code after the program stopped. (PP-2513)
 - When a newly applied tool offset changed the Z position, yellow (jogging) history lines appeared in the Tool Path display, even though no motion had occurred. (PP-2520)
- We improved calibration on touch screens that we haven't tested or added support for. (PP-2516)

Mills

- We fixed issues where:
 - If the hard stop referencing was disabled (because of unusual fixture requirements) when using a RapidTurn on an M+ mill, unexpected machine table movement could occur while the mill was referencing the Z-axis. (PP-2484)
 - The appropriate 4th axis option didn't persist after it was selected. (PP-2517)

RELEASE NOTES

- When using coordinate rotation, the Tool Path display didn't immediately redraw with the changed rotation. (PP-2537)
- While using a 4th axis with an M+ mill, the 4th axis couldn't be jogged before referencing the X, Y, and Z axes. (PP-2541)

Lathe

- We fixed issues where:
 - In some situations, starting a G-code program at a line greater than 1 could result in unexpected motion from feed rate motion commands earlier in the file. (PP-2528)
 - During G33 spindle-synchronized motion (threading), a warning wasn't displayed to indicate if the required feed rates exceeded the machine's maximum feed rate. (PP-2545)

RELEASE NOTES

MANAGE PATHPILOT VERSIONS



Note: You don't need to install updates sequentially. You can update from any previous version to the current version of PathPilot.

Depending on what you want to do, refer to the following sections:

- "Download and Install an Update File" (below)
- "Install an Update File from a USB Drive" (below)
- "Install a Previous Version of an Update File" (on the next page)

2.1 DOWNLOAD AND INSTALL AN UPDATE FILE



Note: Downloading and installing an update file requires an Internet connection. From the PathPilot interface, confirm that the Internet button LED light is on.

1. Confirm that the PathPilot controller is powered on and out of **Reset** mode.
2. From the PathPilot interface, on the **Status** tab, select **Update**.

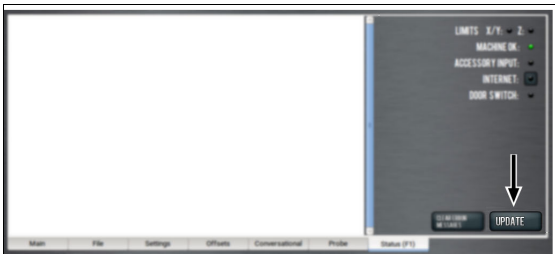


Figure 2-1: Update button on the Status tab.

3. From the **Software Update** dialog box, select **Check Online**.

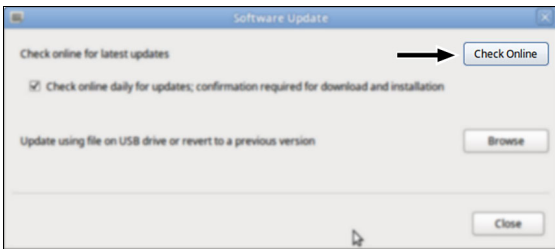


Figure 2-2: Software Update dialog box.

4. Select **Install**.

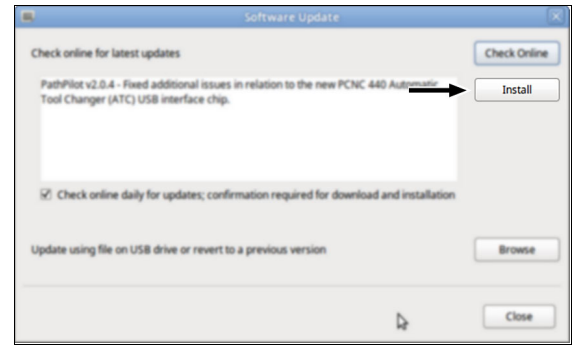


Figure 2-3: Install button on the Software Update dialog box.

The update file is downloaded, and a notification dialog box displays.

5. From the dialog box, select **OK**.

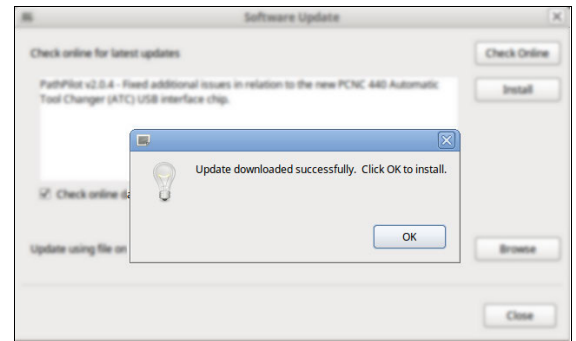


Figure 2-4: OK button on the dialog box.

The update file is installed on the PathPilot controller.

6. Follow the on-screen instructions to restart the PathPilot controller.

2.2 INSTALL AN UPDATE FILE FROM A USB DRIVE

1. From tormach.com/pp-updates, download the most recent PathPilot update file.
2. Transfer the PathPilot update file to a USB drive.
3. Put the USB drive into the PathPilot controller.
4. Confirm that the PathPilot controller is powered on and out of **Reset** mode.

RELEASE NOTES

- From the PathPilot interface, on the **Status** tab, select **Update**.



Figure 2-5: Update button on the Status tab.

- From the **Software Update** dialog box, select **Browse**.

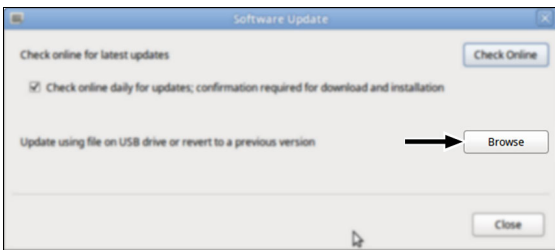


Figure 2-6: Software Update dialog box.

- From the **Browse** dialog box, select **USB**.



Figure 2-7: Browse dialog box.

- Select the desired update file, and then select **Update**.



Figure 2-8: Update button.

The update file is installed on the PathPilot controller.

- Follow the on-screen instructions to restart the PathPilot controller.

2.3 INSTALL A PREVIOUS VERSION OF AN UPDATE FILE

- Confirm that the PathPilot controller is powered on and out of **Reset** mode.
- From the PathPilot interface, on the **Status** tab, select **Update**.

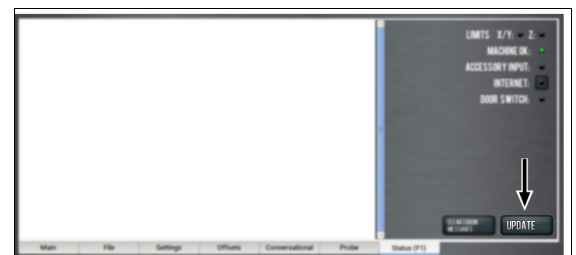


Figure 2-9: Update button on the Status tab.

- From the **Software Update** dialog box, select **Browse**.

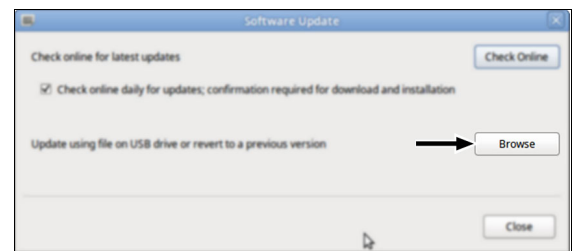


Figure 2-10: Software Update dialog box.

RELEASE NOTES

- From the **Browse** dialog box, select **Previous Versions**.

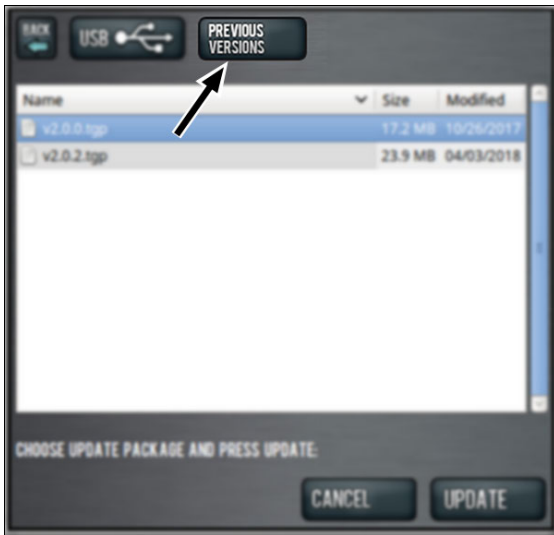


Figure 2-11: Browse dialog box.

- Select the desired update file, and then select **Update**.



Figure 2-12: Update button.

The update file is installed on the PathPilot controller.

- Follow the on-screen instructions to restart the PathPilot controller.