

RELEASE NOTES FOR PATHPILOT V2.7.2

January 2021

ENHANCEMENTS

All

- We improved the usability of toolpath extents display: the extents no longer include G28/G30 motions, or lead-in moves for set-start-line. (PP-3105)

Mills

- We optimized/reduced time spent waiting for the spindle to be at speed at the start of a G84 non-rigid tapped hole. (PP-3150)

FIXED ISSUES

All

- We fixed issues where:
 - The A-axis display selection wasn't enabled on start up, requiring you to explicitly disable and re-enable it. (PP-3119)
 - In some rare situations, or when setting up A-axis probing for the first time, the stock/axis center settings didn't match the setting shown in the interface. Also, A-axis probing now starts from the current A-axis position, rather than always rotating to A0, allowing probing of stock center at arbitrary A-axis angles. (PP-3128)
 - In PathPilot HUB, some older PCNC 1100 mill configurations were unable to switch to RapidTurn mode because of an INI file error. (PP-3133)
 - The alarm level of G-code errors detected at load was too low, making these errors less visible to users. This issue was introduced in v2.7.0/v2.7.1. (PP-3153)
- We slightly reduced the acceleration for microARC, and we reduced the G0 rapid speed from 20 rpm to 18 rpm. (PP-3144)

RELEASE NOTES

Mills

- We fixed issues where:
 - On Series 3 and older 1100 mills, program load/redraw reported a cryptic error message (program execution was unaffected). (PP-3120)
 - Mill conversational DXF failed to draw a preview for a positive Z End position. (PP-3125)

Lathes

- We fixed issues where:
 - For some metric thread pitches in conversational lathe tapping, the exported value didn't exactly match the desired value (for example, 1.4925 mm instead of 1.5 mm). (PP-3147)
 - The high belt spindle speed on 8L lathes was off by factor of 2. (PP-3151)

RELEASE NOTES

MANAGE PATHPILOT VERSIONS

You don't need to install updates sequentially. You can update from any previous version to the current version of PathPilot. Depending on what you want to do, refer to the following sections:

- "Download and Install an Update File from the Controller" (below)
- "Install an Update File from a USB Drive" (on the next page)
- "Install a Previous Version of an Update File" (page 5)

DOWNLOAD AND INSTALL AN UPDATE FILE FROM THE CONTROLLER

1. Confirm that the PathPilot controller is powered on and out of **Reset** mode.
2. Downloading and installing an update file requires an Internet connection. From the **Status** tab, confirm that the **Internet** button LED light is on. Then, select **Update**.



Figure 1: Update button on the Status tab.

3. From the **Software Update** dialog box, select **Check Online**.

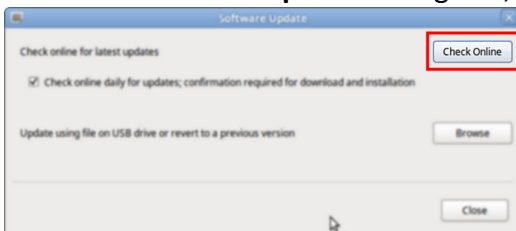


Figure 2: Software Update dialog box.

RELEASE NOTES

4. Select **Install**.

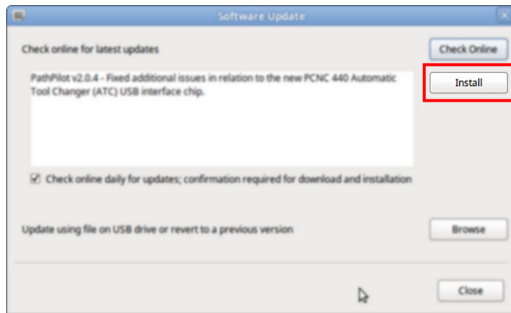


Figure 3: Install button on the Software Update dialog box.

The update file is downloaded, and a notification dialog box displays.

5. From the dialog box, select **OK**.

The update file is installed on the PathPilot controller.

6. Follow the on-screen instructions to restart the PathPilot controller.

INSTALL AN UPDATE FILE FROM A USB DRIVE

1. From the [PathPilot support center](#), download the most recent PathPilot update file.

2. Transfer the PathPilot update file to a USB drive.

3. Put the USB drive into the PathPilot controller.

4. Confirm that the PathPilot controller is powered on and out of **Reset** mode.

5. From the **Status** tab, select **Update**.

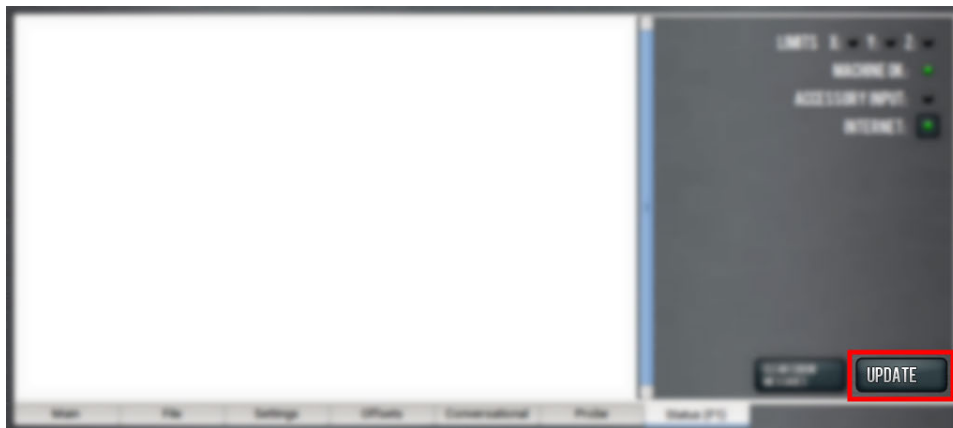


Figure 4: Update button on the Status tab.

6. From the **Software Update** dialog box, select **Browse**.

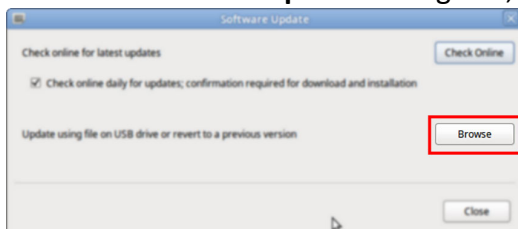


Figure 5: Software Update dialog box.

RELEASE NOTES

7. From the **Browse** dialog box, select **USB**.



Figure 6: Browse dialog box.

8. Select the desired update file, and then select **Update**.
The update file is installed on the PathPilot controller.
9. Follow the on-screen instructions to restart the PathPilot controller.

INSTALL A PREVIOUS VERSION OF AN UPDATE FILE

1. Confirm that the PathPilot controller is powered on and out of **Reset** mode.
2. From the **Status** tab, select **Update**.

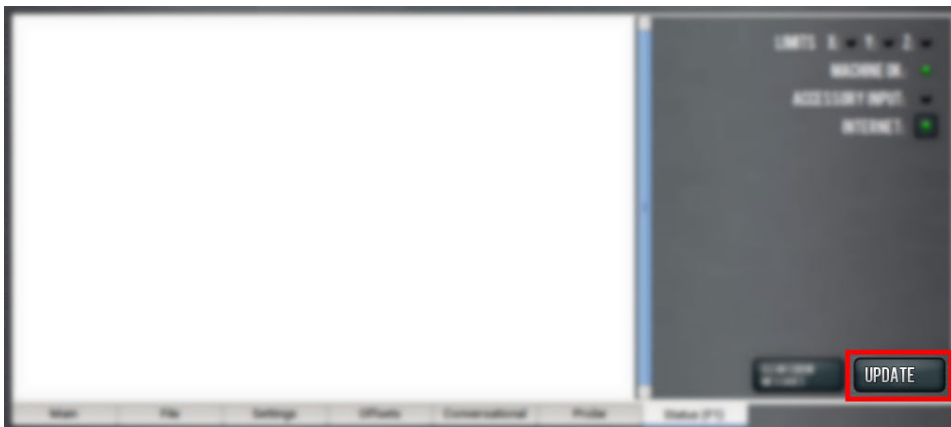


Figure 7: Update button on the Status tab.

3. From the **Software Update** dialog box, select **Browse**.

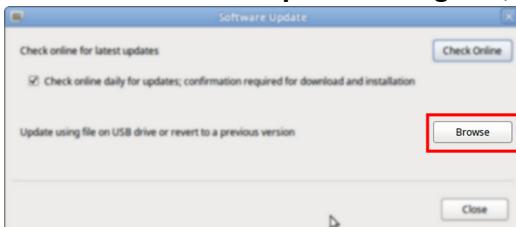


Figure 8: Software Update dialog box.

RELEASE NOTES

4. From the **Browse** dialog box, select **Previous Versions**.

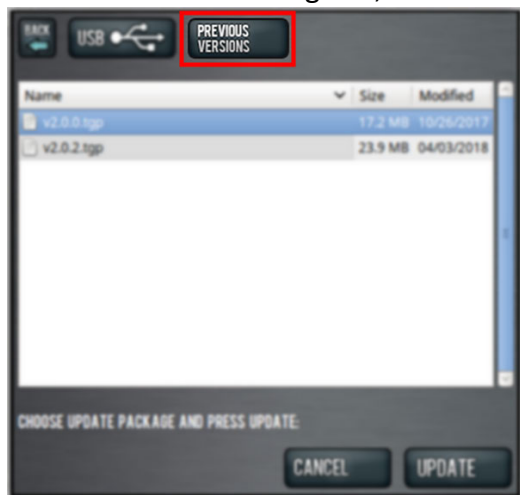


Figure 9: Browse dialog box.

5. Select the desired update file, and then select **Update**.
The update file is installed on the PathPilot controller.
6. Follow the on-screen instructions to restart the PathPilot controller.