

## RELEASE NOTES FOR PATHPILOT V2.9.2

October 2022

### ENHANCEMENTS

#### All

- Previously, loading a file larger than 2 MB disabled syntax highlighting and required you to manually enable it again. Now, syntax highlighting is restored to its previous setting when a file smaller than 2 MB is loaded. (PP-3675)

### FIXED ISSUES

#### All

We fixed issues where:

- The previous tool live plot didn't clear when set start line was used with **Show Only Current Tool**. (PP-3595)
- The **Show Only Current Tool** setting sometimes reset after editing and reloading a G-code file. (PP-3596)
- In rare situations, a lot of continuous user interaction (like loading programs or conversational code/edits) resulted in low system resources and poor performance. (PP-3630)

#### Lathes

We fixed issues where:

- Conversational edits sometimes asked you to save changes again even though they had already been saved. (PP-3417)
- The minimum "X" extent of the tool path displayed incorrectly in the preview. (PP-3658)

#### Router

- We fixed an issue where, during occasional automated tool changes, a "bad number format" error appeared on the **Status** tab. (PP-3685)

## MANAGE PATHPILOT VERSIONS

You don't need to install updates sequentially. You can update from any previous version to the current version of PathPilot. Depending on what you want to do, refer to the following sections:

- "Download and Install an Update File from the Controller" (below)
- "Install an Update File from a USB Drive" (on the next page)
- "Install a Previous Version of an Update File" (page 4)

## DOWNLOAD AND INSTALL AN UPDATE FILE FROM THE CONTROLLER

1. Confirm that the PathPilot controller is powered on and out of **Reset** mode.
2. Downloading and installing an update file requires an Internet connection. From the **Status** tab, confirm that the **Internet** button LED light is on. Then, select **Update**.

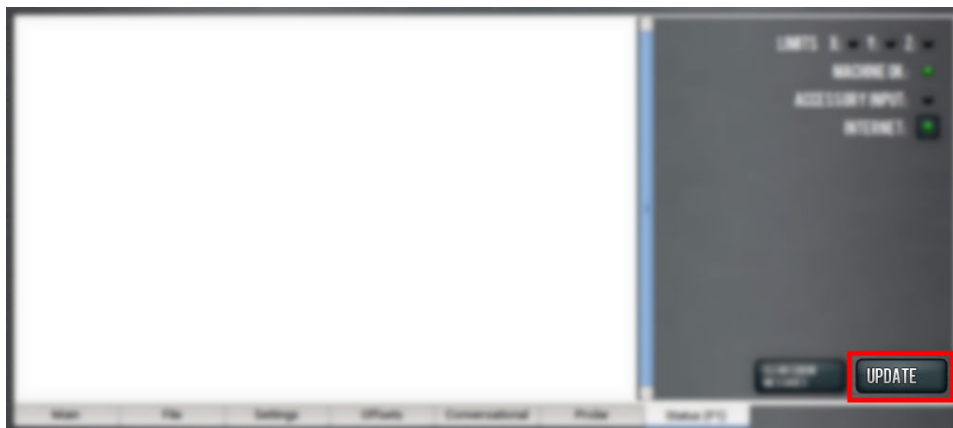


Figure 1: Update button on the Status tab.

3. From the **Software Update** dialog box, select **Check Online**.

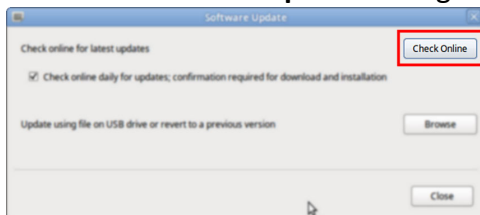


Figure 2: Software Update dialog box.

4. Select **Install**.



Figure 3: Install button on the Software Update dialog box.

The update file is downloaded, and a notification dialog box displays.

# INSTALL AN UPDATE FILE FROM A USB DRIVE

5. From the dialog box, select **OK**.  
The update file is installed on the PathPilot controller.
6. Follow the on-screen instructions to restart the PathPilot controller.

## INSTALL AN UPDATE FILE FROM A USB DRIVE

1. From the [PathPilot support center](#), download the most recent PathPilot update file.
2. Transfer the PathPilot update file to a USB drive.
3. Put the USB drive into the PathPilot controller.
4. Confirm that the PathPilot controller is powered on and out of **Reset** mode.
5. From the **Status** tab, select **Update**.

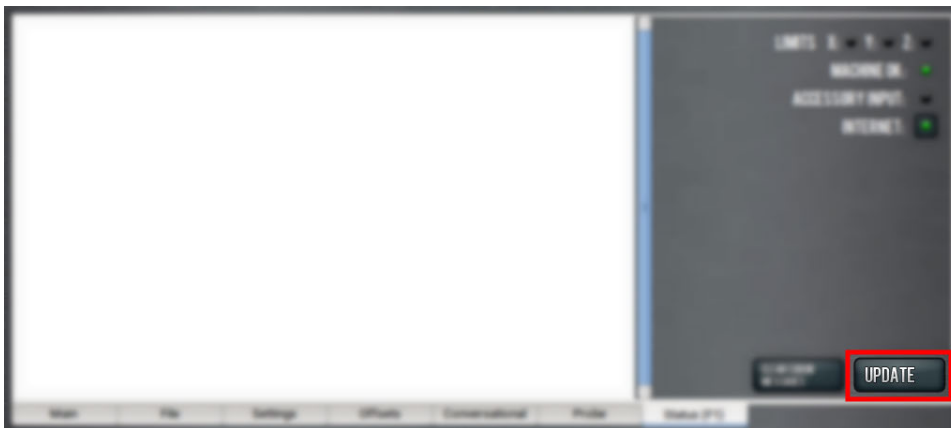


Figure 4: Update button on the Status tab.

6. From the **Software Update** dialog box, select **Browse**.

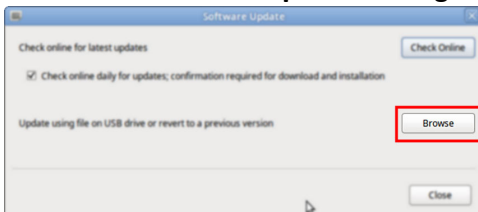


Figure 5: Software Update dialog box.

# INSTALL A PREVIOUS VERSION OF AN UPDATE FILE

7. From the **Browse** dialog box, select **USB**.



Figure 6: Browse dialog box.

8. Select the desired update file, and then select **Update**.  
The update file is installed on the PathPilot controller.
9. Follow the on-screen instructions to restart the PathPilot controller.

## INSTALL A PREVIOUS VERSION OF AN UPDATE FILE

1. Confirm that the PathPilot controller is powered on and out of **Reset** mode.
2. From the **Status** tab, select **Update**.

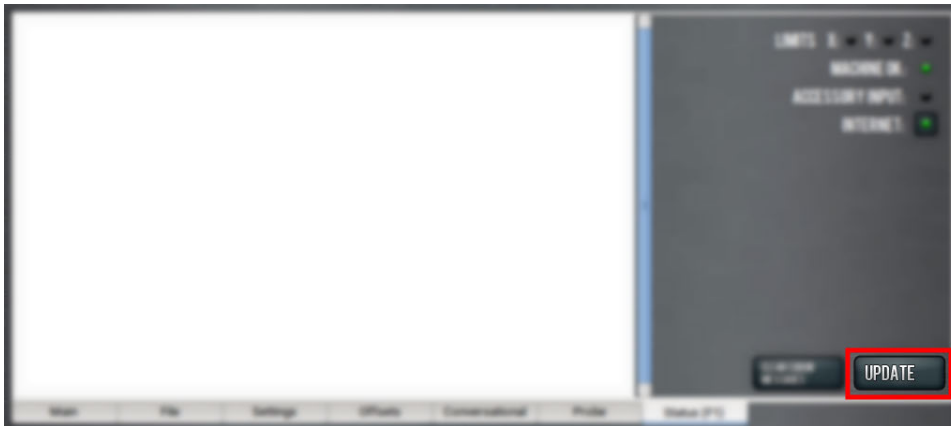


Figure 7: Update button on the Status tab.

3. From the **Software Update** dialog box, select **Browse**.

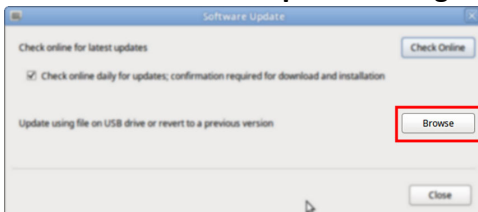
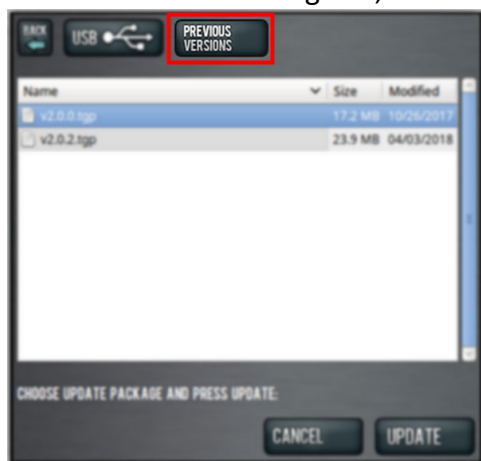


Figure 8: Software Update dialog box.

# INSTALL A PREVIOUS VERSION OF AN UPDATE FILE

4. From the **Browse** dialog box, select **Previous Versions**.



*Figure 9: Browse dialog box.*

5. Select the desired update file, and then select **Update**.  
The update file is installed on the PathPilot controller.
6. Follow the on-screen instructions to restart the PathPilot controller.