

TECHNICAL DOCUMENT

Lathe Lift Kit Instructions

Product Identification: Lift Kit for 15L Slant-PRO™ Lathe (PN 33269)

Purpose: This document details the installation and use of the of the Lathe Lift Kit to temporarily raise the lathe and remove the attached shipping pallet.

Qty.	Lathe Lift Kit	PN
4	Lifting Foot	—
4	M20 x 250 mm Threaded Rod	—
4	Lifting Pad	—
16	M8 x 20 Socket Head Cap Screw	—
16	M8 Flat Washer	—

NOTE: If any of these items are missing, contact Tormach Customer Service at (608) 849-8381 for a replacement.



NOTE: Before separating the lathe from the pallet, ensure there is enough space on the sides of the lathe to slide the pallet out from underneath it. If walls or immovable objects are in the way, a different location may be required.

TECHNICAL DOCUMENT

1. Tape electrical cabinet door shut to prevent it from swinging open during the lift procedure (see **Figure 1**).



Figure 1

2. Open coolant tank door on the front of the lathe and temporarily slide Coolant Tank off shipping pallet (see **Figure 2**).

NOTE: Do not remove the pallet out before removing the Coolant Tank. Failure to do so could result in machine damage.



Figure 2

3. Four pallet bolts are used to temporarily attach the pallet to the lathe; identify two right-hand bolts located inside the controller cabinet (see **Figure 3**).
4. Loosen and remove nuts and washers from two bolts inside the controller cabinet.



Figure 3

TECHNICAL DOCUMENT

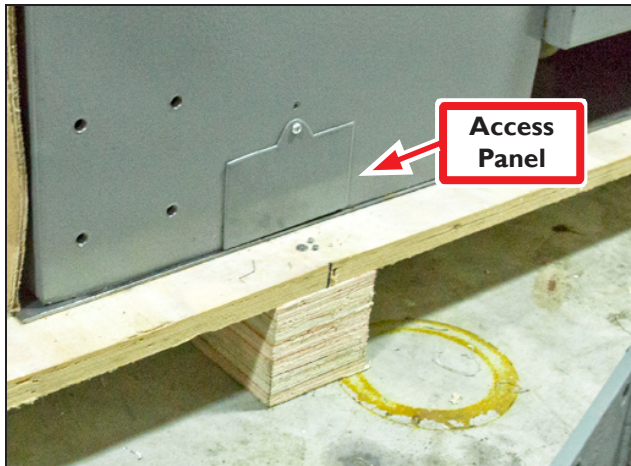


Figure 4

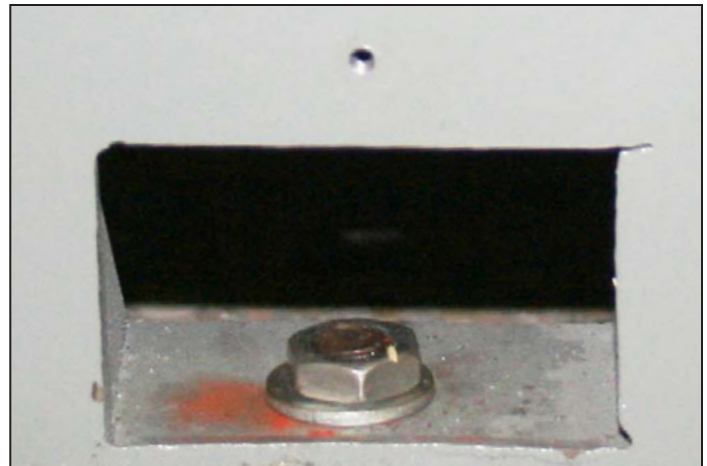


Figure 5

5. Identify two small Access Panels on left side of lathe (see **Figure 4**).
6. Using a Phillips screwdriver, remove Access Panels; set aside.
7. Loosen and remove nuts and washers from two bolts inside the Access Panels (see **Figure 5**).

8. Using four M8 x 20 mm Socket Head Cap Screws and four M8 Flat Washers, attach one Lifting Foot to each of the four corner attachment sites (see **Figure 6**); securely tighten.



Figure 6

TECHNICAL DOCUMENT



Figure 7

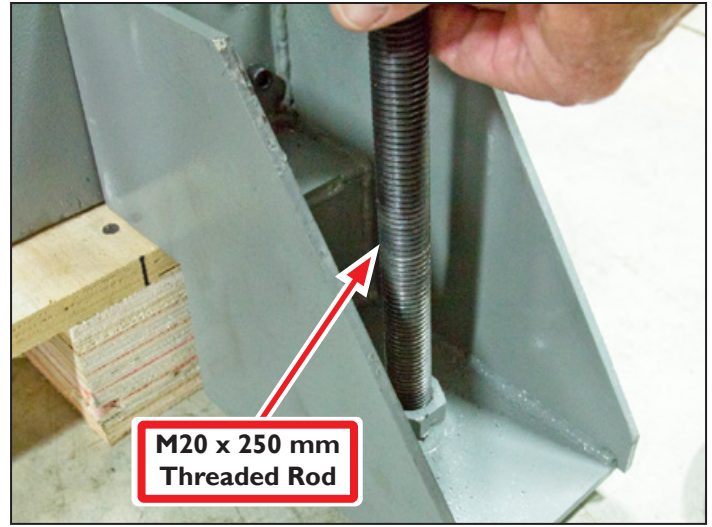


Figure 8

- Slide a Lifting Pad underneath each of the four installed Lifting Feet; align hole on Lifting Pad with Lifting Foot's bolt hole (see **Figure 7**).
- Attach one M20 x 250 mm Threaded Rod through each Lifting Foot and into its Lifting Pad (see **Figure 7** and **Figure 8**).

- Using a socket wrench, gradually adjust each Lifting Foot to raise the lathe evenly until lathe is clear of the floor (see **Figure 9**).

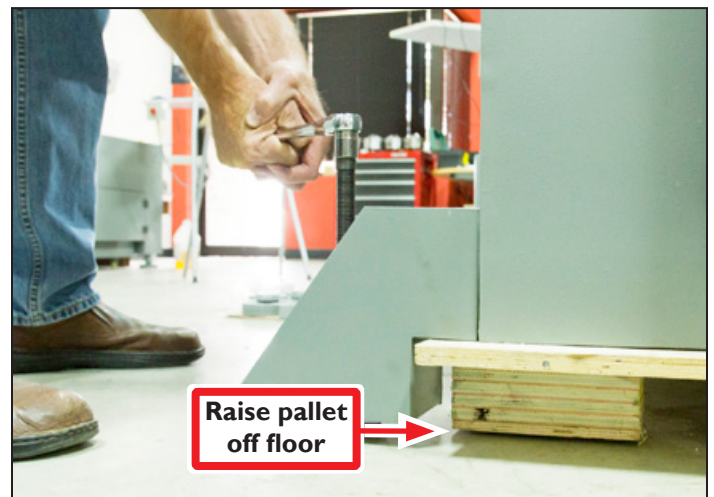


Figure 9

TECHNICAL DOCUMENT

- Slide the pallet from underneath the lathe (see **Figure 10**).
- Install four lathe feet in place of four pallet bolts removed earlier in this document. Refer to the documentation that ships with the 15L Slant-PRO Lathe for information on installation of lathe feet.

NOTE: Do not leave the Lifting Feet on the lathe. Lifting Feet are not intended to support the lathe during operation.

- When the lathe is completely supported by four lathe feet, lower four M20 x 250 mm Threaded Rods in stages until the lathe rests on its feet; remove rods (see **Figure 11**).
- Unscrew and remove four M8 x 20 Socket Head Cap Screws and M8 Washers securing each Lifting Foot to the lathe; remove four Lifting Feet from lathe.



Figure 10



Figure 11